

# HPLC Application

ID No.: 18847

## Extraction of Expanded Amphetamines Using Strata X-C on Kinetex 2.6µm C18 50 x 2.1mm ID by LCMS

**Column:** Kinetex® 2.6 µm C18 100 Å, LC Column 50 x 2.1 mm, Ea

**Dimensions:** 50 x 2.1 mm ID

**Order No:** 00B-4462-AN

**Elution Type:** Gradient

**Eluent A:** 0.1%FA-5mM ammonium acetate in H<sub>2</sub>O

**Eluent B:** 0.1%FA-5mM ammonium acetate in Methanol

| Gradient Profile: | Step No. | Time (min) | Pct A | Pct B |
|-------------------|----------|------------|-------|-------|
|                   | 1        | 0          | 90    | 10    |
|                   | 2        | 3          | 60    | 40    |
|                   | 3        | 3.02       | 5     | 95    |
|                   | 4        | 3.3        | 5     | 95    |
|                   | 5        | 3.31       | 90    | 10    |
|                   | 6        | 5.1        | 90    | 10    |

**Flow Rate:** 450 µL/min

**Col. Temp.:** ambient

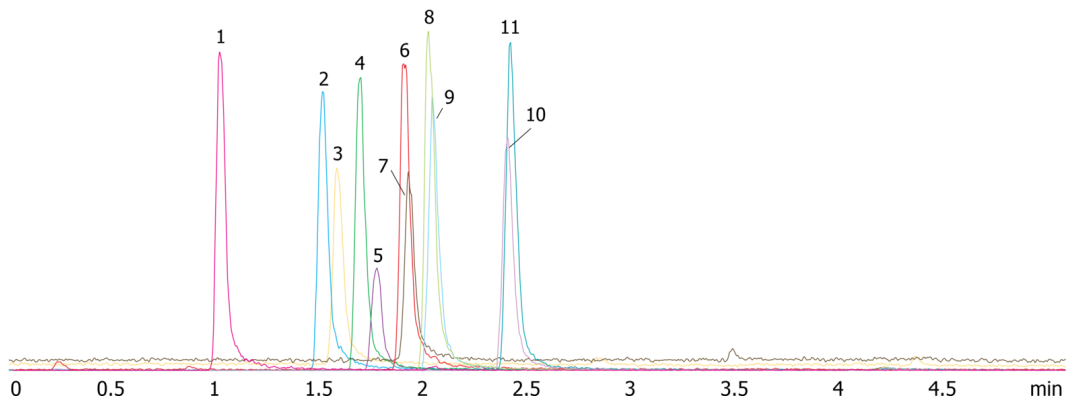
**Detection:** Mass Spectrometer (MS) @ amu (ambient)

**Detector Info:** ESI conditions

Positive Ionization

|      |         |
|------|---------|
| NEB: | 12.00   |
| CUR: | 11.00   |
| IS:  | 4500.00 |
| TEM: | 450.00  |
| CAD: | 11.00   |
| EP:  | 10.00   |

18847



Products used in this application:



## Extraction of Expanded Amphetamines Using Strata X-C on Kinetex 2.6 $\mu$ m C18 50 x 2.1mm ID by LCMS

### ANALYTES:

- 1 HMMA
- 2 Amphetamine-d11
- 3 Amphetamine
- 4 Methamphetamine
- 5 Methamphetamine-d14
- 6 MDA-d5
- 7 MDA
- 8 MDMA-d5
- 9 MDMA
- 10 MDEA-d5
- 11 MDEA

