

# HPLC Application

ID No.: 18850

## Pain panel extracted from human urine at cutoff - Kinetex C18 2.6µm 50x2.1mm LCMSMS

**Column:** Kinetex® 2.6 µm C18 100 Å, LC Column 50 x 2.1 mm, Ea

**Dimensions:** 50 x 2.1 mm ID

**Order No:** 00B-4462-AN

**Elution Type:** Gradient

**Eluent A:** 0.1% Formic acid in H<sub>2</sub>O

**Eluent B:** 0.1% Formic acid in ACN

Gradient Profile:	Step No.	Time (min)	Pct A	Pct B
	1	0	95	5
	2	1.3	40	60
	3	1.31	5	95
	4	1.51	5	95
	5	1.52	95	5
	6	2.2	95	5

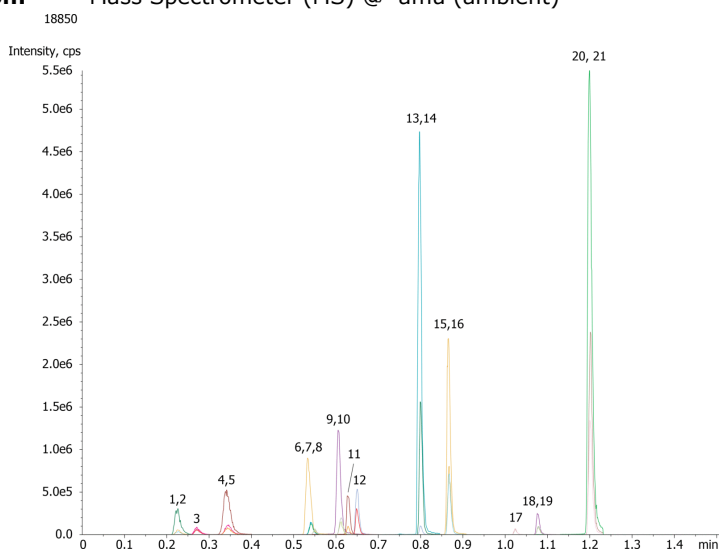
**Flow Rate:** 1.2 mL/min

**Col. Temp.:** ambient

**Detection:** Mass Spectrometer (MS) @ amu (ambient)



Products used in this application:



## Pain panel extracted from human urine at cutoff - Kinetex C18 2.6µm 50x2.1mm LCMSMS

### ANALYTES:

- 1 Morphine
- 2 Morphine-d3
- 3 Oxymorphone
- 4 Hydromorphone
- 5 Hydromorphone-d6
- 6 Codeine
- 7 Codeine-d6
- 8 Naloxone
- 9 Oxycodone
- 10 Oxycodone-d6
- 11 Naltrexone
- 12 Hydrocodone
- 13 cis-Tramadol
- 14 C13-D3-tramadol
- 15 Meperidine
- 16 Meperidine-d4
- 17 Fentanyl
- 18 Buprenorphine
- 19 Buprenorphine-d4
- 20 Methadone
- 21 Methadone-d3

