

# HPLC Application

ID No.: 18851

## NIDA-5 Extracted from Human Urine at Cutoff - Kinetex 2.6µm C18 50 x 2.1mm ID by LCMSMS

**Column:** Kinetex® 2.6 µm C18 100 Å, LC Column 50 x 2.1 mm, Ea

**Dimensions:** 50 x 2.1 mm ID

**Order No:** 00B-4462-AN

**Elution Type:** Gradient

**Eluent A:** 0.1% Formic acid in H<sub>2</sub>O

**Eluent B:** 0.1% Formic acid in ACN

Gradient Profile:	Step No.	Time (min)	Pct A	Pct B
	1	0	95	5
	2	1.7	5	95
	3	1.9	5	95
	4	1.91	95	5
	5	2.6	95	5

**Flow Rate:** 1.2 mL/min

**Col. Temp.:** ambient

**Detection:** Mass Spectrometer (MS) @ amu (ambient)

**Detector Info:** ESI conditions

positive mode

NEB: 10.00

CUR: 11.00

IS: 4500.00

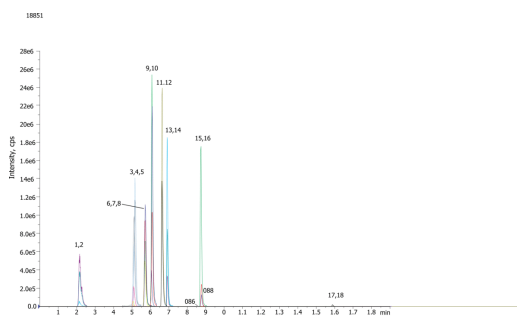
TEM: 450.00

CAD: 11.00

EP: 10.00



Products used in this application:



## NIDA-5 Extracted from Human Urine at Cutoff - Kinetex 2.6µm C18 50 x 2.1mm ID by LCMSMS

### ANALYTES:

- 1 Morphine
- 2 Morphine-d3
- 3 Amphetamine
- 4 Codeine
- 5 Codeine-d6
- 6 Methamphetamine
- 7 MDA
- 8 D5-MDA D6-oxycodone
- 9 MDMA
- 10 MDMA-d5
- 11 MDEA
- 12 MDEA-d5
- 13 Benzoylcegonine
- 14 Benzoylcegonine-d3
- 15 PCP
- 16 PCP-d5
- 17 THC-COOH
- 18 THC-COOH-d3

