

HPLC Application

ID No.: 18853

Propranolol on Lux 5 µm Cellulose-1 by Chiral SFC

Column: Lux[®] 5 µm Cellulose-1, LC Column 250 x 4.6 mm, Ea

Dimensions: 250 x 4.6 mm ID

Order No: 00G-4459-E0

Elution Type: Isocratic

Eluent A: Methanol with 0.1% DEA

Eluent B: CO₂

Gradient Profile:	Step No.	Time (min)	Pct A	Pct B
	1	0	25	75

Flow Rate: 2.5 mL/min

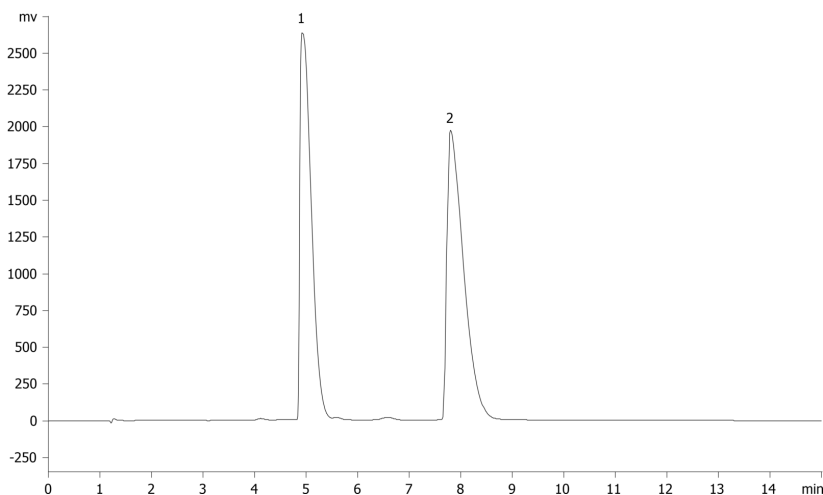
Col. Temp.: 35 °C

Detection: UV-Vis Abs.-Diode Array (PDA) @ 220 nm (ambient)

Analyst Note: Application using Jasco SFC instrument courtesy of Cephalon, Inc.
18853



Products used in this application:



ANALYTES:

- 1 Propranolol
- 2 Propranolol