

HPLC Application

ID No.: 18880

Metanephrine and Normetanephrine on Kinetex 2.6 µm HILIC 100 Å batch 48 pH 3.2 50 x 4.6 mm Agilent 1200

Column: Kinetex® 2.6 µm HILIC 100 Å, LC Column 50 x 4.6 mm, Ea

Dimensions: 50 x 4.6 mm ID

Order No: 00B-4461-E0

Elution Type: Isocratic

Eluent A: 90/10 ACN/100mM NH₄ formate pH 3.2

Gradient	Step No.	Time (min)	Pct A
Profile:	1	0	100

Flow Rate: 2 mL/min

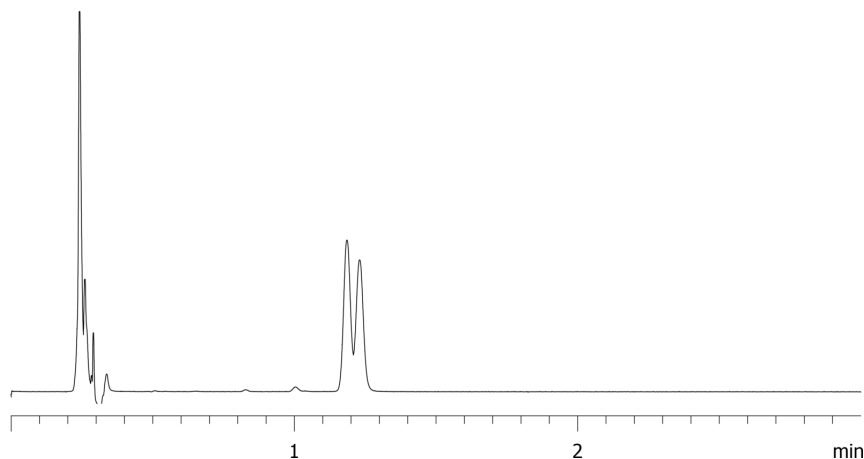
Col. Temp.: ambient

Detection: UV-Vis Abs.-Diode Array (PDA) @ 270 nm (25 °C)

18880



Products used in this application:



ANALYTES:

1 Metanephrine

Retention Time: 1.18 min

2 Normetanephrine

Retention Time: 1.23 min

