

# HPLC Application

ID No.: 18881

## Metanephrine and Normetanephrine on Kinetex 2.6 µm HILIC batch 48 pH 5.8 50 x 4.6 mm Agilent 1200

**Column:** Kinetex<sup>®</sup> 2.6 µm HILIC 100 Å, LC Column 50 x 4.6 mm, Ea

**Dimensions:** 50 x 4.6 mm ID

**Order No:** 00B-4461-E0

**Elution Type:** Isocratic

**Eluent A:** 90/10 ACN/100mM NH<sub>4</sub> acetate pH 5.8

Gradient	Step No.	Time (min)	Pct A
<b>Profile:</b>	<b>1</b>	0	100

**Flow Rate:** 2 mL/min

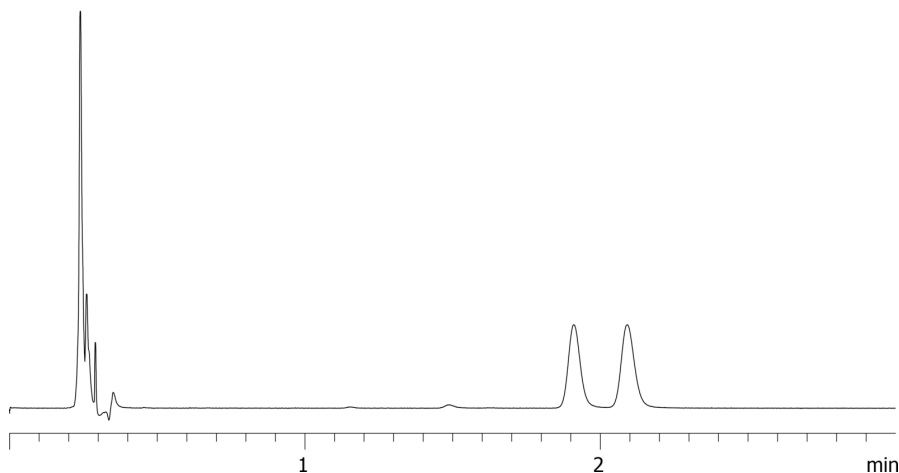
**Col. Temp.:** ambient

**Detection:** UV-Vis Abs.-Diode Array (PDA) @ 270 nm (25 °C)

18881



Products used in this application:



### ANALYTES:

- 1** Normetanephrine  
Retention Time: 1.91 min
- 2** Metanephrine  
Retention Time: 2.09 min