

# HPLC Application

ID No.: 18882

## Morphine and Metabolites on Kinetex 2.6µm HILIC batch #48 50x4.6mm

**Column:** Kinetex<sup>®</sup> 2.6 µm HILIC 100 Å, LC Column 50 x 4.6 mm, Ea

**Dimensions:** 50 x 4.6 mm ID

**Order No:** 00B-4461-E0

**Elution Type:** Gradient

**Eluent A:** 90/10 Acetonitrile/100mM Ammonium Formate pH 3.2

**Eluent B:** 50/50 Acetonitrile/20mM Ammonium Formate pH 3.2

<b>Gradient Profile:</b>	<b>Step No.</b>	<b>Time (min)</b>	<b>Pct A</b>	<b>Pct B</b>
	<b>1</b>	0	100	0
	<b>2</b>	0.22	100	0
	<b>3</b>	2.72	0	100
	<b>4</b>	2.73	100	0
	<b>5</b>	5.22	100	0

**Flow Rate:** 2 mL/min

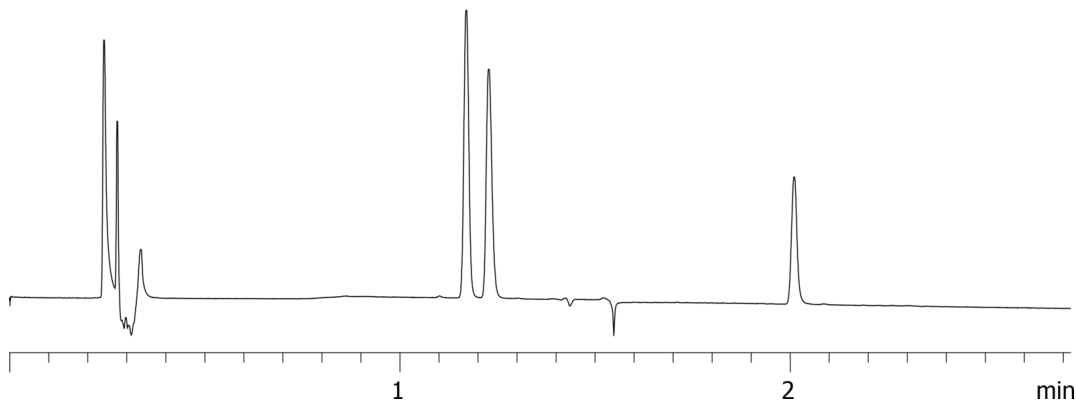
**Col. Temp.:** ambient

**Detection:** UV-Vis Abs.-Diode Array (PDA) @ 260 nm (ambient)

18882



Products used in this application:



### ANALYTES:

- 1** Normorphine  
Retention Time: 1.17 min
- 2** Morphine  
Retention Time: 1.23 min
- 3** Morphine-3-beta-D-glucuronide  
Retention Time: 2.01 min