

HPLC Application

ID No.: 18891

Neurotransmitters using Kinetex 2.6 µm C18 (50 x 2.1 mm)

Column: Kinetex® 2.6 µm C18 100 Å, LC Column 50 x 2.1 mm, Ea

Dimensions: 50 x 2.1 mm ID

Order No: 00B-4462-AN

Elution Type: Isocratic

Eluent A: 5mM Ammonium formate pH 3.2

Eluent B: Methanol

Gradient Profile:	Step No.	Time (min)	Pct A	Pct B
	1	0	97	3

Flow Rate: 0.4 mL/min

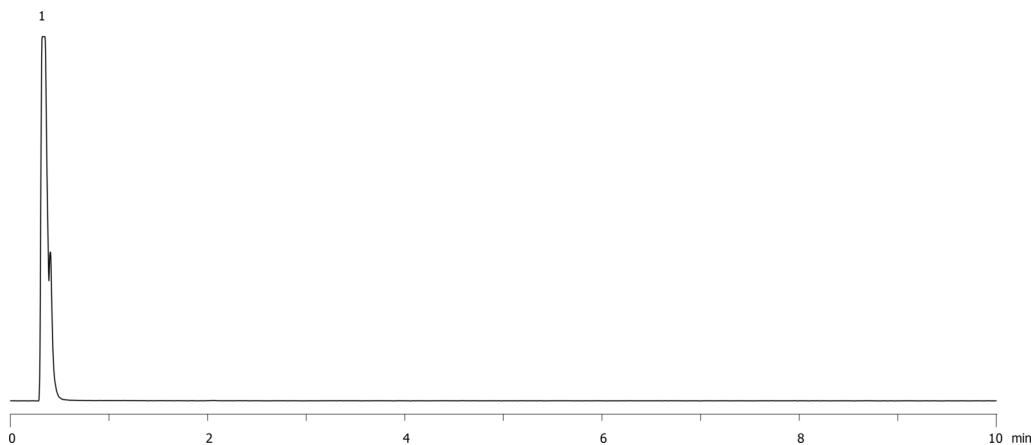
Col. Temp.: ambient

Detection: ELSD @ nm (40 °C)

18891



Products used in this application:



ANALYTES:

1 alpha-Ketoglutaric acid + Pyroglutamic acid + Glutamic acid + GABA

