

## High MW proteins on BioSep4000 (2) and TSK

**Column:** BioSep™ 5 µm SEC-s4000 500 Å, LC Column 300 x 7.8 mm, Ea

**Dimensions:** 300 x 7.8 mm ID

**Order No:** 00H-2147-K0

**Elution Type:** Isocratic

**Eluent A:** 100mM Phosphate buffer pH 6.8

Gradient Profile:	Step No.	Time (min)	Pct A
	1	0	100

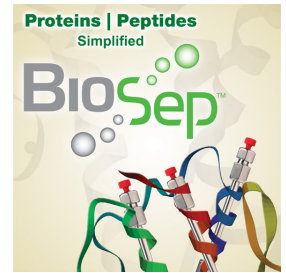
**Flow Rate:** 1 mL/min

**Col. Temp.:** ambient

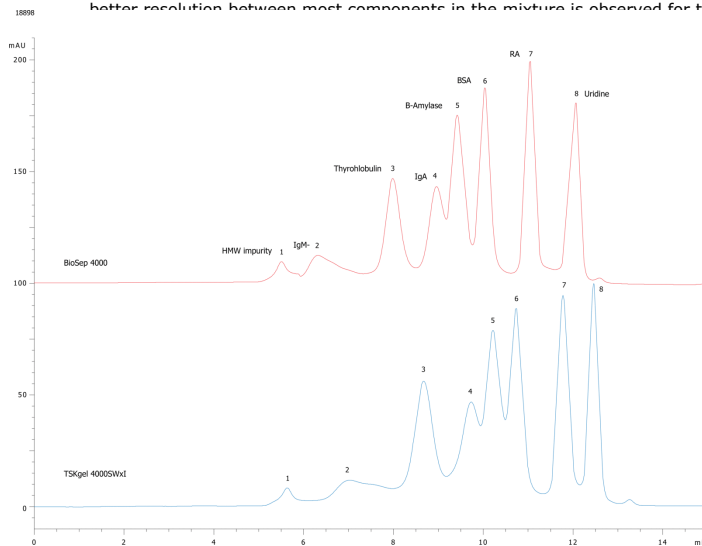
**Detection:** UV-Vis Abs.-Variable Wave.(UV) @ 220 nm (ambient)

**Analyst Note:** Application Focus: To compare and contrast BioSep4000 and a leading competitor large range GFC column (TSKgel SWxl 4000)

Using a standard mixture of high molecular weight proteins optimized for the 4000 series separation, the BioSep 4000 and a leading competitor column (TSKgel SWxl 4000) were compared using standard conditions (100 mM phosphate pH 6.8, 1 mL/min). Similar amounts of the standard were injected onto each column. When comparing peak resolutions between columns certain observations can be made regarding the performance of the two columns. A better resolution between most components in the mixture is observed for the BioSep 4000 column versus the competitor design, leaving a smaller



Products used in this application:



### ANALYTES:

- 1 IgM
- 2 Thyroglobulin
- 3 IgA
- 4 beta-Amylase
- 5 BSA
- 6 Ribonuclease A
- 7 Uridine

