

# HPLC Application

ID No.: 18915

## Warfarin Sodium Related Substance HPLC Analysis (HP-EUR) on Luna 5u CN 150 x 4.6mm ID

**Column:** Luna® 5 µm CN 100 Å, LC Column 150 x 4.6 mm, Ea

**Dimensions:** 150 x 4.6 mm ID

**Order No:** 00F-4255-E0

**Elution Type:** Isocratic

**Eluent A:** 1:25:75 acetic acid/ACN/H2O

| Gradient        | Step No. | Time (min) | Pct A |
|-----------------|----------|------------|-------|
| <b>Profile:</b> | <b>1</b> | 0          | 100   |

**Flow Rate:** 2 mL/min

**Col. Temp.:** 30 °C

**Detection:** UV-Vis Abs.-Variable Wave.(UV) @ 260 nm (ambient)

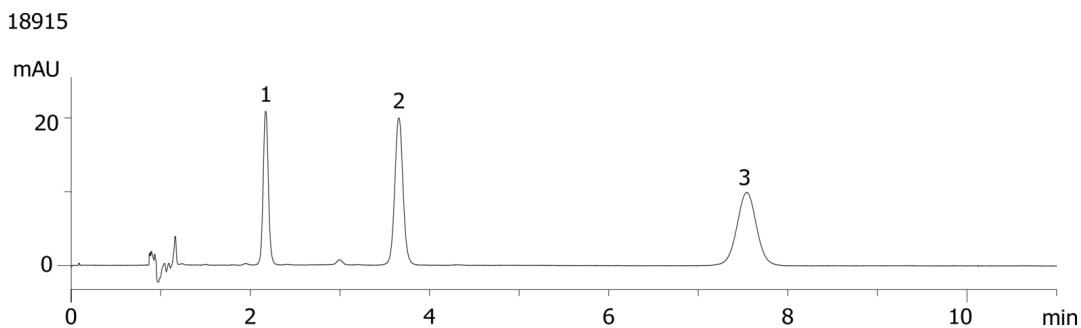
**Analyst Note:** SecurityGuard™ Guard Cartridge System extends column lifetime.

- SecurityGuard Cartridges, CN 4 x 3.0mm ID, 10/Pk Part No.: AJ0-4305

- Holder Part No.: KJ0-4282



Products used in this application:



### ANALYTES:

- 1** Impurity B  
Retention Time: 2.171 min
- 2** Impurity C  
Retention Time: 3.657 min
- 3** Warfarin  
Retention Time: 7.541 min

