

## Protein Calibration Curve on BioSep-SEC-S2000(2)

**Column:** BioSep™ 5 µm SEC-s2000 145 Å, LC Column 300 x 7.8 mm, Ea

**Dimensions:** 300 x 7.8 mm ID

**Order No:** 00H-2145-K0

**Elution Type:** Isocratic

**Eluent A:** 100mM Sodium Phosphate, 300mM NaCl, pH 7.0

Gradient	Step No.	Time (min)	Pct A
Profile:	1	0	100

**Flow Rate:** 1 mL/min

**Col. Temp.:** ambient

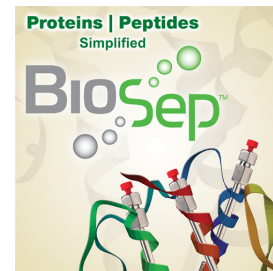
**Detection:** UV-Vis Abs.-Variable Wave.(UV) @ 280 nm (ambient)

**Detector Info:** 3rd order of polynomial MW calibration curves

**Analyst Note:** SecurityGuard™ Guard Cartridge System extends column lifetime.

- SecurityGuard Cartridges, GFC-2000 4 x 3.0mm ID, 10/Pk Part No.: AJ0-4487

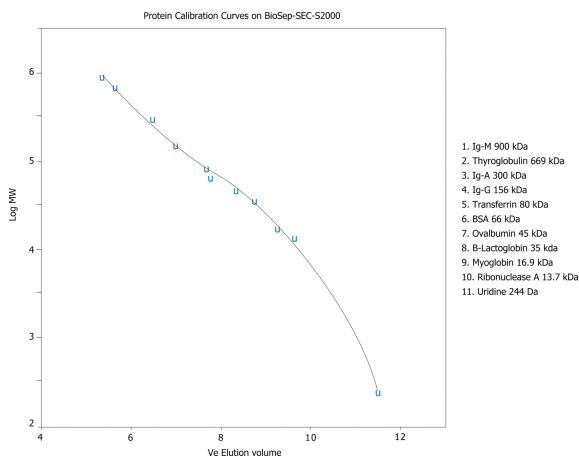
- Holder Part No.: KJ0-4282



Products used in this application:



18933



### ANALYTES:

1 11 Proteins

