

## Low MW proteins and peptides on BioSep2000(2)

**Column:** BioSep™ 5 µm SEC-s2000 145 Å, LC Column 300 x 7.8 mm, Ea

**Dimensions:** 300 x 7.8 mm ID

**Order No:** 00H-2145-K0

**Elution Type:** Isocratic

**Eluent A:** 45% Acetonitrile, 0.1% TFA

Gradient Profile:	Step No.	Time (min)	Pct A
	1	0	100

**Flow Rate:** 1 mL/min

**Col. Temp.:** ambient

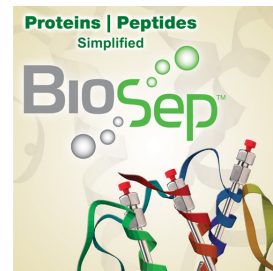
**Detection:** UV-Vis Abs.-Variable Wave.(UV) @ 214 nm (ambient)

**Analyst Note:** Application ID # 18945: Low MW proteins and peptides on BioSep 2000

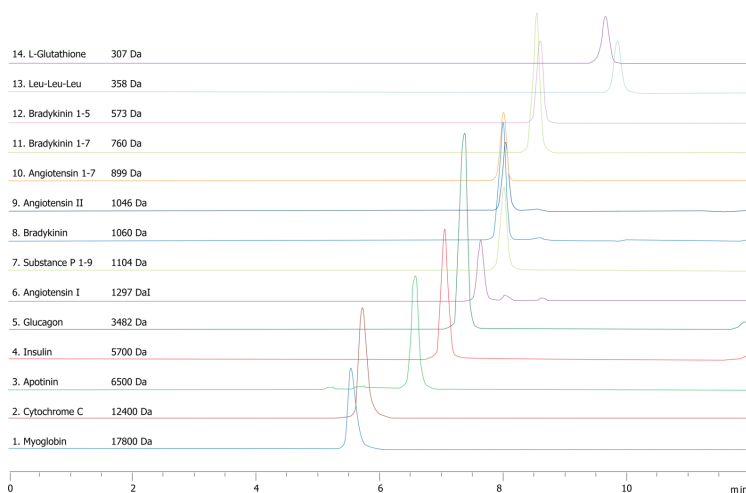
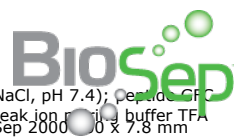
Application Topic: Low MW Separation of Peptides by GFC

Unlike protein GFC separations of proteins using buffers that resemble physiological conditions (10mM PO4, 150mM NaCl, pH 7.4); peptide GFC separations require different conditions to get good low molecular weight resolution. The use of acetonitrile and the weak ion pair buffer TFA. In this example application different peptides from 300 Daltons all the way up to 18 Kilodaltons are injected on a BioSep 2000 300 x 7.8 mm column and overlaid to show the separation range of the column using these mobile phase conditions. Note that peptide generally elute according

18945



Products used in this application:



### ANALYTES:

- 1 Proteins and peptides

