

HPLC Application

ID No.: 18956

b-Blockers (Bupranolol) on Lux 5 µm Cellulose-2 by Chiral SFC

Column: Lux[®] 5 µm Cellulose-2, LC Column 250 x 4.6 mm, Ea

Dimensions: 250 x 4.6 mm ID

Order No: 00G-4457-E0

Elution Type: Isocratic

Eluent A: Methanol with 0.1% DEA

Eluent B: Carbon Dioxide

| Gradient Profile: | Step No. | Time (min) | Pct A | Pct B |
|-------------------|----------|------------|-------|-------|
| | 1 | 0 | 20 | 80 |

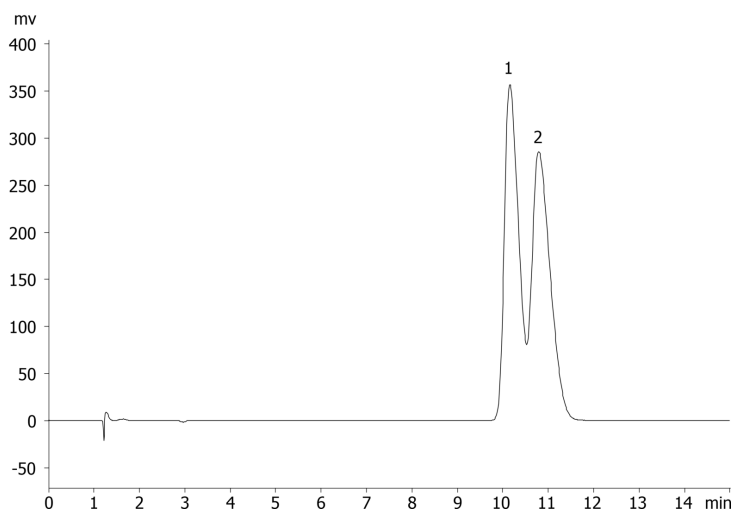
Flow Rate: 1 mL/min

Col. Temp.: 35 °C

Detection: UV-Vis Abs.-Diode Array (PDA) @ 220 nm (ambient)

Analyst Note: Application using Jasco SFC instrument courtesy of Cephalon, Inc.

18956



ANALYTES:

- 1 Bupranolol
- 2 Bupranolol



Products used in this application:

