

# HPLC Application

ID No.: 18980

## Propranolol on Lux 5 µm Cellulose-1 by Chiral SFC with MeOH dissolution solvent

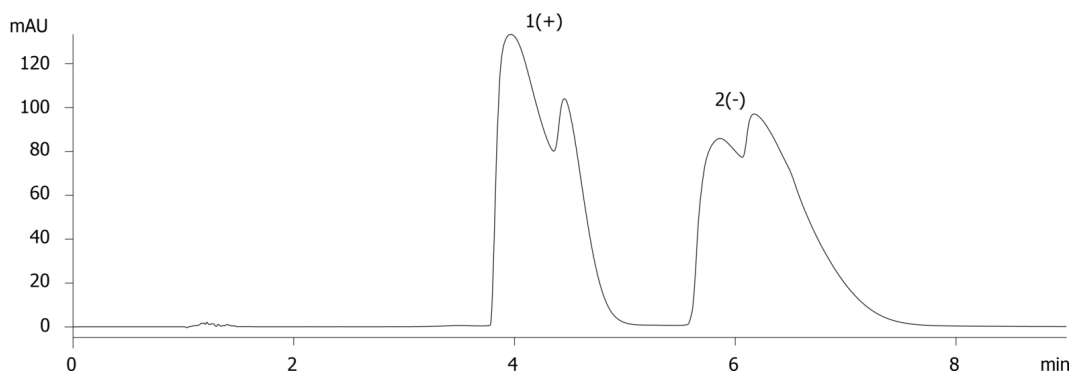
**Column:** Lux<sup>®</sup> 5 µm Cellulose-1, LC Column 250 x 4.6 mm, Ea  
**Dimensions:** 250 x 4.6 mm ID  
**Order No:** 00G-4459-E0  
**Elution Type:** Isocratic  
**Eluent A:** Methanol with 0.1% DEA  
**Eluent B:** Carbon Dioxide  
**Gradient**

| Step No. | Time (min) | Pct A | Pct B |
|----------|------------|-------|-------|
| 1        | 0          | 25    | 75    |

**Profile:**  
**Flow Rate:** 2.5 mL/min  
**Col. Temp.:** 35 °C  
**Detection:** Laser Polarimeter @ 220 nm (ambient)  
**Analyst Note:** Sample was dissolved in Methanol.  
18980



Products used in this application:



### ANALYTES:

- 1 Propranolol
- 2 Propranolol

