

HPLC Application

ID No.: 18993

Terfenadine on Luna NH2 5 µm by SFC

Column: Luna® 5 µm NH2 100 Å, LC Column 250 x 4.6 mm, Ea

Dimensions: 250 x 4.6 mm ID

Order No: 00G-4378-E0

Elution Type: Gradient

Eluent A: Methanol with 0.1% DEA

Eluent B: Carbon Dioxide

Gradient Profile:	Step No.	Time (min)	Pct A	Pct B
	1	0	10	90
	2	2	10	90
	3	12	40	60
	4	14	40	60
	5	15	10	90

Flow Rate: 3 mL/min

Col. Temp.: 35 °C

Detection: UV-Vis Abs.-Fixed Wave. (UV) @ 254 nm (35 °C)

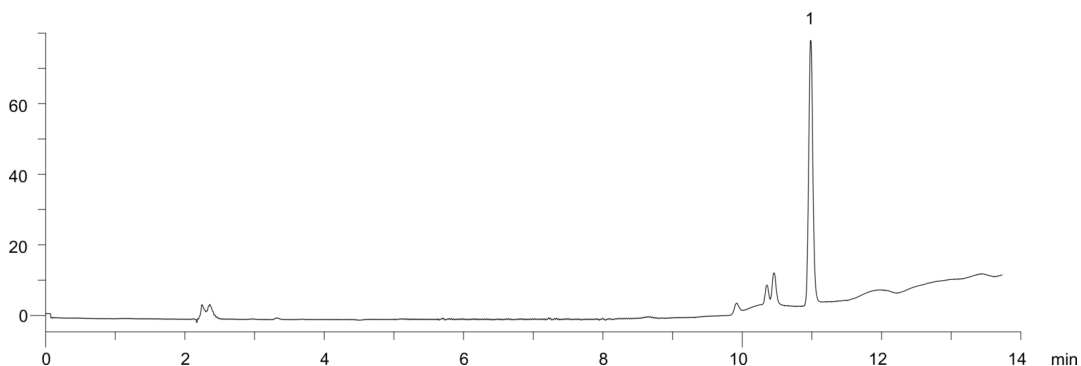
Detector Info: Thar Discovery Series, Super Pure SFC instrument provided courtesy of Thar Technologies

Analyst Note: SecurityGuard™ Guard Cartridge System extends column lifetime.

- SecurityGuard Cartridges, Silica 4 x 3.0mm, 10/Pk Part No.: AJ0-4348

- Holder Part No.: KJ0-4282

18993



Products used in this application:



ANALYTES:

1 Terfenadine

