

# HPLC Application

ID No.: 18997

## Propafenone on Luna HILIC 5 $\mu$ m by SFC

**Column:** Luna<sup>®</sup> 5  $\mu$ m HILIC 200  $\text{\AA}$ , LC Column 250 x 4.6 mm, Ea

**Dimensions:** 250 x 4.6 mm ID

**Order No:** 00G-4450-E0

**Elution Type:** Gradient

**Eluent A:** Methanol with 0.1% DEA

**Eluent B:** Carbon Dioxide

Gradient Profile:	Step No.	Time (min)	Pct A	Pct B
	1	0	10	90
	2	2	10	90
	3	12	40	60
	4	14	40	60
	5	15	10	90

**Flow Rate:** 3 mL/min

**Col. Temp.:** 35  $^{\circ}$ C

**Detection:** UV-Vis Abs.-Fixed Wave. (UV) @ 254 nm (35  $^{\circ}$ C)

**Detector Info:** Thar Discovery Series, Super Pure SFC instrument provided courtesy of Thar Technologies

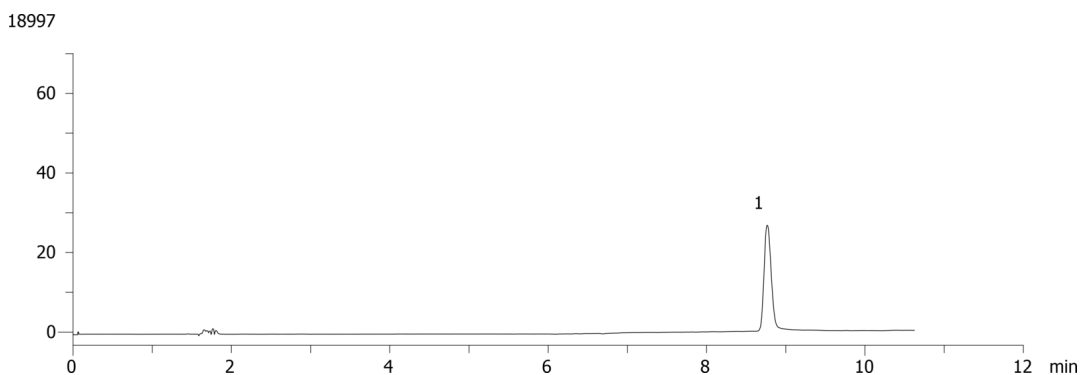
**Analyst Note:** SecurityGuard<sup>™</sup> Guard Cartridge System extends column lifetime.

- SecurityGuard Cartridges, Silica 4 x 3.0mm, 10/Pk Part No.: AJ0-4348

- Holder Part No.: KJ0-4282



Products used in this application:



### ANALYTES:

1 Propafenone

