

# HPLC Application

ID No.: 18998

## Propafenone on Luna PFP-2 5 µm by SFC

**Column:** Luna® 5 µm PFP(2) 100 Å, LC Column 250 x 4.6 mm, Ea

**Dimensions:** 250 x 4.6 mm ID

**Order No:** 00G-4448-E0

**Elution Type:** Gradient

**Eluent A:** Methanol with 0.1% DEA

**Eluent B:** Carbon Dioxide

| Gradient Profile: | Step No. | Time (min) | Pct A | Pct B |
|-------------------|----------|------------|-------|-------|
|                   | 1        | 0          | 10    | 90    |
|                   | 2        | 2          | 10    | 90    |
|                   | 3        | 12         | 40    | 60    |
|                   | 4        | 14         | 40    | 60    |
|                   | 5        | 15         | 10    | 90    |

**Flow Rate:** 3 mL/min

**Col. Temp.:** 35 °C

**Detection:** UV-Vis Abs.-Fixed Wave. (UV) @ 254 nm (35 °C)

**Detector Info:** Thar Discovery Series, Super Pure SFC instrument provided courtesy of Thar Technologies

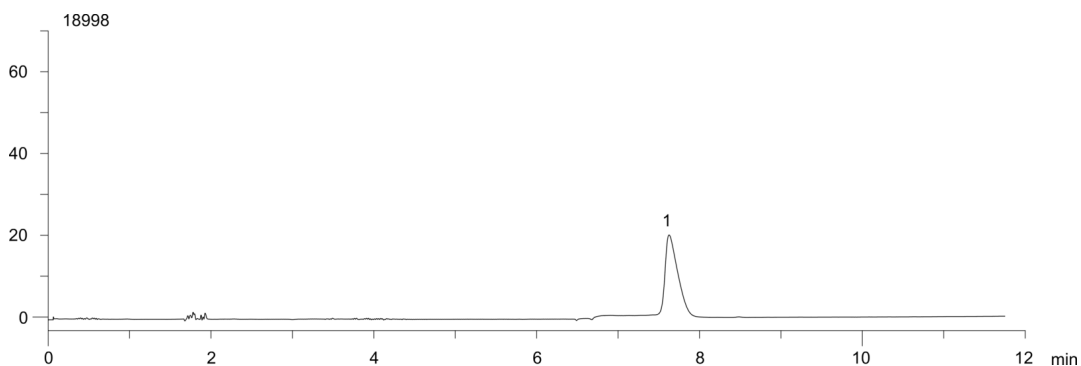
**Analyst Note:** SecurityGuard™ Guard Cartridge System extends column lifetime.

- SecurityGuard Cartridges, Silica 4 x 3.0mm, 10/Pk Part No.: AJ0-4348

- Holder Part No.: KJ0-4282



Products used in this application:



### ANALYTES:

1 Propafenone

