

## Glibenclamide Related Substance HPLC Analysis (HP-EUR) on Kinetex 2.6u C18 100 x 4.6mm ID

**Column:** Kinetex® 2.6 µm C18 100 Å, LC Column 100 x 4.6 mm, Ea

**Dimensions:** 100 x 4.6 mm ID

**Order No:** 00D-4462-E0

**Elution Type:** Gradient

**Eluent A:** 20:50:930 101.8g/L Triethylamine solution/ACN/H2O

**Eluent B:** 20:65:915 mobile phase A/H2O/ACN

Gradient Profile:	Step No.	Time (min)	Pct A	Pct B
	1	0	45	55
	2	15	45	55
	3	30	5	95
	4	40	5	95
	5	41	45	55
	6	55	45	55

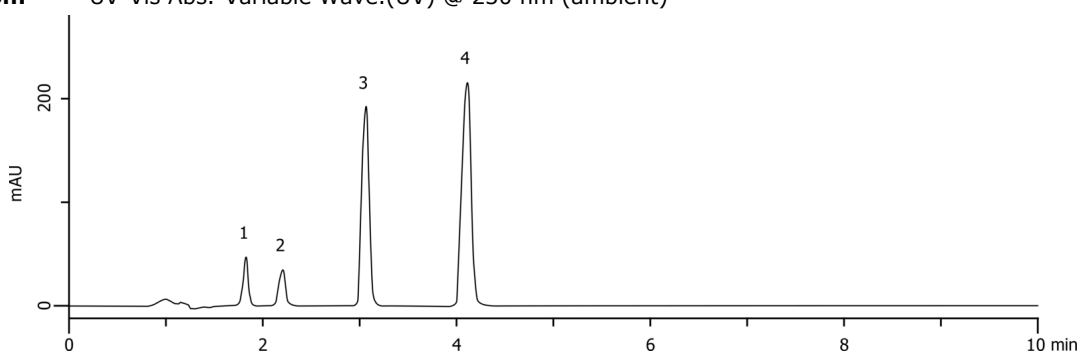
**Flow Rate:** 0.8 mL/min

**Col. Temp.:** ambient

**Detection:** UV-Vis Abs.-Variable Wave.(UV) @ 230 nm (ambient)



Products used in this application:



### ANALYTES:

- 1 Glibenclamide impurity A  
Retention Time: 1.827 min
- 2 Glibenclamide impurity B  
Retention Time: 2.205 min
- 3 Glibenclamide  
Retention Time: 3.063 min
- 4 Glizlazide  
Retention Time: 4.112 min

