

HPLC Application

ID No.: 19021

Glibenclamide Related Substance HPLC Analysis (HP-EUR) on Kinetex 2.6u C18 50 x 4.6mm ID @ 1.2ml/min

Column: Kinetex[®] 2.6 µm C18 100 Å, LC Column 50 x 4.6 mm, Ea

Dimensions: 50 x 4.6 mm ID

Order No: 00B-4462-E0

Elution Type: Gradient

Eluent A: 20:50:930 101.8g/L Triethylamine solution/ACN/H₂O

Eluent B: 20:65:915 mobile phase A/H₂O/ACN

Gradient Profile:	Step No.	Time (min)	Pct A	Pct B
	1	0	45	55
	2	15	45	55
	3	30	5	95
	4	40	5	95
	5	41	45	55
	6	55	45	55

Flow Rate: 1.2 mL/min

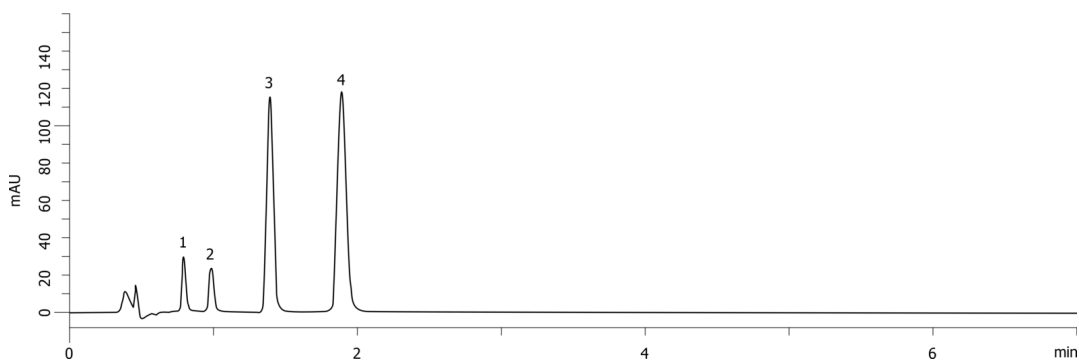
Col. Temp.: ambient

Detection: UV-Vis Abs.-Variable Wave.(UV) @ 230 nm (ambient)

19021



Products used in this application:



ANALYTES:

- 1** Glibenclamide impurity A
Retention Time: 0.793 min
- 2** Glibenclamide impurity B
Retention Time: 0.982 min
- 3** Glibenclamide
Retention Time: 1.39 min
- 4** Gliclazide
Retention Time: 1.891 min

