

HPLC Application

ID No.: 19033

LC/MS for Trypsin Digested BSA-peptide mapping on Kinetex 2.6 µm C18 150 x 4.6mm

Column: Kinetex[®] 2.6 µm C18 100 Å, LC Column 150 x 4.6 mm, Ea

Dimensions: 150 x 4.6 mm ID

Order No: 00F-4462-E0

Elution Type: Gradient

Eluent A: 0.1% Formic Acid in water

Eluent B: 0.1% Formic Acid in Acetonitrile

Gradient Profile:	Step No.	Time (min)	Pct A	Pct B
	1	0	97	3
	2	40	66.5	33.5
	3	50	40	60
	4	52	5	95
	5	52.1	97	3

Flow Rate: 1.2 mL/min

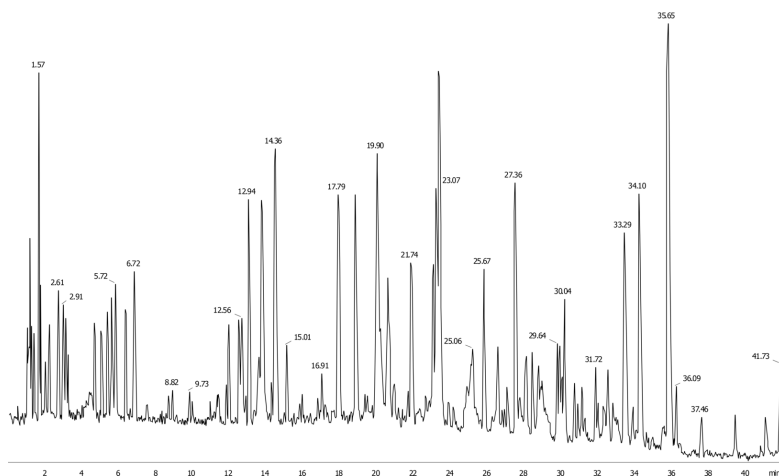
Col. Temp.: ambient

Detection: Mass Spectrometer (MS) @ amu (ambient)

19033



Products used in this application:



ANALYTES:

- 1 Bovine Serum Albumin (BSA)

Retention Time: 1.2 min

