

HPLC Application

ID No.: 19039

LC/MS for Trypsin Digested Myoglobin on Kinetex 2.6 μ C18, Halo 2.7μ C18, XBridge 3.5μ C18 phases

Column: Kinetex[®] 2.6 μm C18 100 Å, LC Column 150 x 4.6 mm, Ea

Dimensions: 150 x 4.6 mm ID

Order No: 00F-4462-E0

Elution Type: Gradient

Eluent A: 0.1% Formic Acid in water

Eluent B: 0.1% Formic Acid in Acetonitrile

Gradient Profile:	Step No.	Time (min)	Pct A	Pct B
	1	0	97	3
	2	25	32	68
	3	27	5	95
	4	27.1	97	3

Flow Rate: 1.2 mL/min

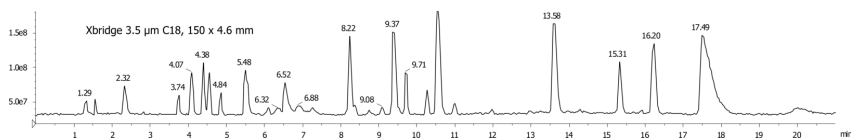
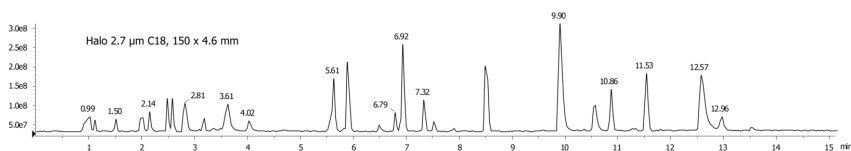
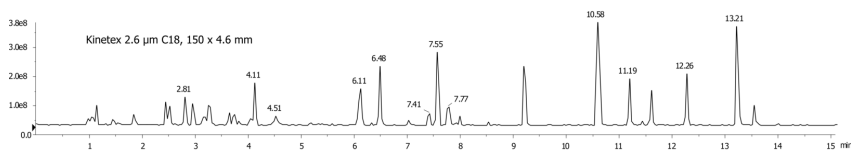
Col. Temp.: ambient

Detection: Mass Spectrometer (MS) @ amu (ambient)

19039



Products used in this application:



ANALYTES:

1 Myoglobin

Retention Time: 1.2 min

