

HPLC Application

ID No.: 19050

Ginsenosides using Kinetex 2.6u C18 150x4.6mm

Column: Kinetex[®] 2.6 μ m C18 100 Å, LC Column 150 x 4.6 mm, Ea

Dimensions: 150 x 4.6 mm ID

Order No: 00F-4462-E0

Elution Type: Gradient

Eluent A: Water with 0.1% H₃PO₄

Eluent B: Acetonitrile

| Gradient Profile: | Step No. | Time (min) | Pct A | Pct B |
|-------------------|----------|------------|-------|-------|
| | 1 | 0 | 78 | 22 |
| | 2 | 15 | 78 | 22 |
| | 3 | 30 | 50 | 50 |

Flow Rate: 1 mL/min

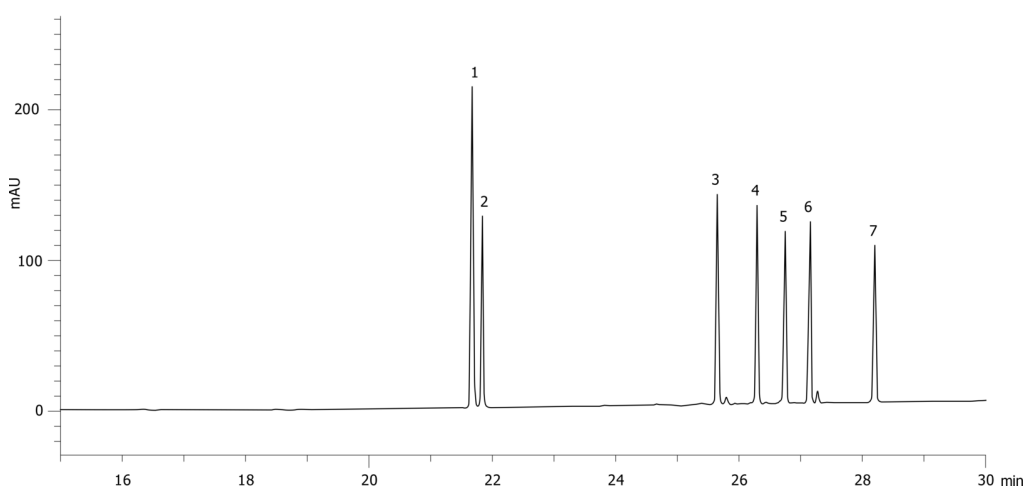
Col. Temp.: ambient

Detection: UV-Vis Abs.-Variable Wave.(UV) @ 200 nm (ambient)

19050



Products used in this application:



ANALYTES:

- 1 Ginsenoside Rg1
- 2 Ginsenoside Re
- 3 Ginsenoside Rf
- 4 Ginsenoside Rb1
- 5 Ginsenoside Rc
- 6 Ginsenoside Rb2
- 7 Ginsenoside Rg

