

# HPLC Application

ID No.: 19074

## Ginsenoside standards using Kinetex 2.6u C18 100x4.6mm

**Column:** Kinetex<sup>®</sup> 2.6 μm C18 100 Å, LC Column 100 x 4.6 mm, Ea

**Dimensions:** 100 x 4.6 mm ID

**Order No:** 00D-4462-E0

**Elution Type:** Gradient

**Eluent A:** Water with 0.1% H<sub>3</sub>PO<sub>4</sub>

**Eluent B:** Acetonitrile

Gradient Profile:	Step No.	Time (min)	Pct A	Pct B
	1	0	78	22
	2	10	78	22
	3	20	50	50

**Flow Rate:** 1 mL/min

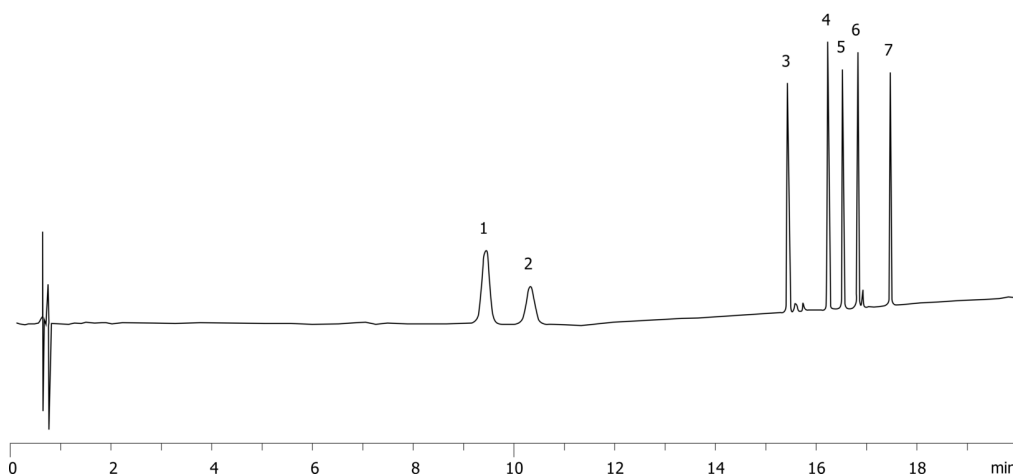
**Col. Temp.:** ambient

**Detection:** UV-Vis Abs.-Variable Wave.(UV) @ 200 nm (ambient)

19074



Products used in this application:



### ANALYTES:

- 1 Ginsenoside Rg1
- 2 Ginsenoside Re
- 3 Ginsenoside Rf
- 4 Ginsenoside Rb1
- 5 Ginsenoside Rc
- 6 Ginsenoside Rb2
- 7 Ginsenoside Rg

