

## Catechins on Kinetex 2.6 µm C18 100 x 4.6 mm at 1.2 ml/min

**Column:** Kinetex® 2.6 µm C18 100 Å, LC Column 100 x 4.6 mm, Ea

**Dimensions:** 100 x 4.6 mm ID

**Order No:** 00D-4462-E0

**Elution Type:** Gradient

**Eluent A:** 0.1% Formic acid

**Eluent B:** 0.1% Formic acid in CH<sub>3</sub>CN

Gradient Profile:	Step No.	Time (min)	Pct A	Pct B
	1	0	85	15
	2	0.67	85	15
	3	4.67	65	35
	4	4.68	85	15
	5	7.34	85	15

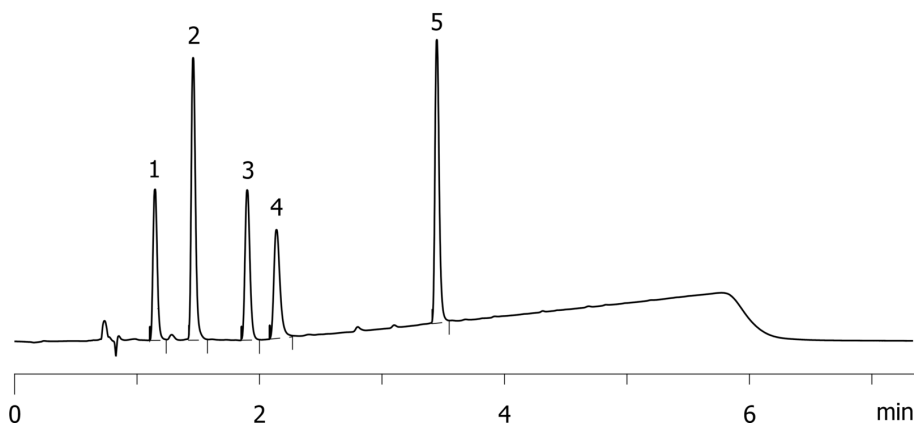
**Flow Rate:** 1.2 mL/min

**Col. Temp.:** ambient

**Detection:** UV-Vis Abs.-Diode Array (PDA) @ 230 nm (ambient)  
19076



Products used in this application:



### ANALYTES:

- 1 Epigallocatechin  
Retention Time: 1.147 min
- 2 Catechin  
Retention Time: 1.459 min
- 3 Epicatechin  
Retention Time: 1.901 min
- 4 Epigallocatechin gallate  
Retention Time: 2.14 min
- 5 Epicatechin gallate  
Retention Time: 3.449 min

