

## Catechins on Kinetex 2.6 µm C18 100 x 4.6 mm at 2 ml/min

**Column:** Kinetex® 2.6 µm C18 100 Å, LC Column 100 x 4.6 mm, Ea

**Dimensions:** 100 x 4.6 mm ID

**Order No:** 00D-4462-E0

**Elution Type:** Gradient

**Eluent A:** 0.1% Formic acid

**Eluent B:** 0.1% Formic acid in CH<sub>3</sub>CN

Gradient Profile:	Step No.	Time (min)	Pct A	Pct B
	1	0	85	15
	2	0.4	85	15
	3	2.79	65	35
	4	2.8	85	15
	5	4.01	85	15

**Flow Rate:** 2 mL/min

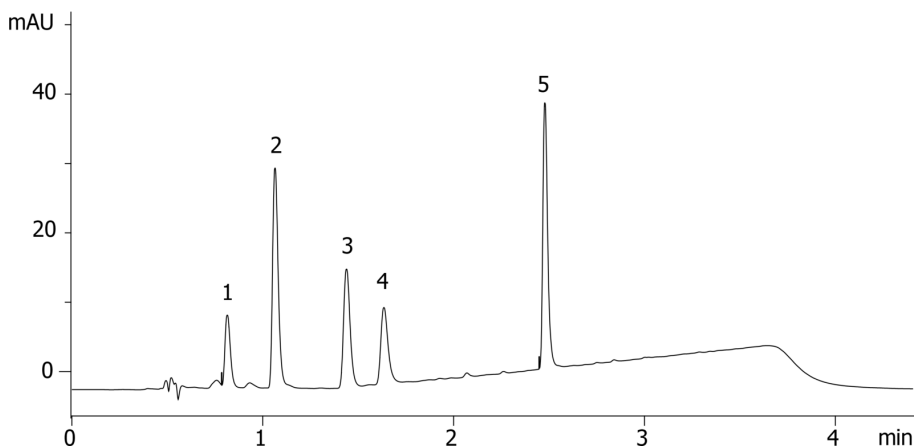
**Col. Temp.:** ambient

**Detection:** UV-Vis Abs.-Diode Array (PDA) @ 230 nm (ambient)

19077



Products used in this application:



### ANALYTES:

- 1** Epigallocatechin  
Retention Time: 0.814 min
- 2** Catechin  
Retention Time: 1.064 min
- 3** Epicatechin  
Retention Time: 1.439 min
- 4** Epigallocatechin gallate  
Retention Time: 1.635 min
- 5** Epicatechin gallate  
Retention Time: 2.478 min

