

# HPLC Application

ID No.: 19078

## Tryptic digest of BSA using Kinetex 2.6u C18 150 x 4.6mm ID

**Column:** Kinetex<sup>®</sup> 2.6  $\mu$ m C18 100  $\text{\AA}$ , LC Column 150 x 4.6 mm, Ea

**Dimensions:** 150 x 4.6 mm ID

**Order No:** 00F-4462-E0

**Elution Type:** Gradient

**Eluent A:** Water with 0.1% TFA

**Eluent B:** Acetonitrile with 0.1% TFA

<b>Gradient Profile:</b>	<b>Step No.</b>	<b>Time (min)</b>	<b>Pct A</b>	<b>Pct B</b>
	<b>1</b>	0	97	3
	<b>2</b>	30	50	50

**Flow Rate:** 1.2 mL/min

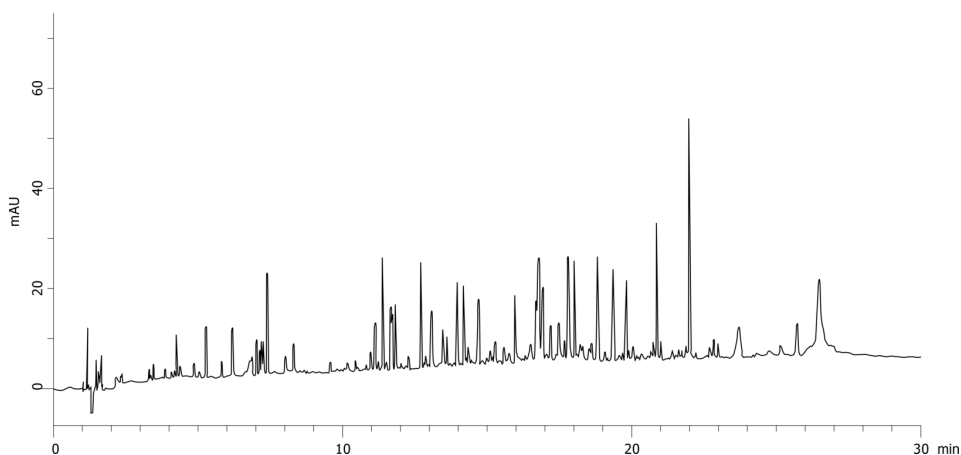
**Col. Temp.:** ambient

**Detection:** UV-Vis Abs.-Variable Wave.(UV) @ nm (ambient)

19078



Products used in this application:



### ANALYTES:

- 1 Bovine Serum Albumin (BSA)

