

HPLC Application

ID No.: 19081

Compare BioSep-SEC-S3000(2) & Sepax SRT SEC-300 Mid MW

Column: BioSep™ 5 µm SEC-s3000 290 Å, LC Column 300 x 7.8 mm, Ea

Dimensions: 300 x 7.8 mm ID

Order No: 00H-2146-K0

Elution Type: Isocratic

Eluent A: 100mM Sodium Phosphate, 300mM NaCl, pH 7.0

Gradient	Step No.	Time (min)	Pct A
Profile:	1	0	100

Flow Rate: 1 mL/min

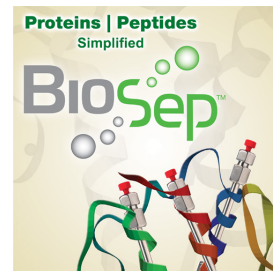
Col. Temp.: ambient

Detection: UV-Vis Abs.-Variable Wave.(UV) @ 280 nm (ambient)

Analyst Note: SecurityGuard™ Guard Cartridge System extends column lifetime.

- SecurityGuard Cartridges, GFC 3000 4 x 3.0mm ID, 10/Pk Part No.: AJ0-4488

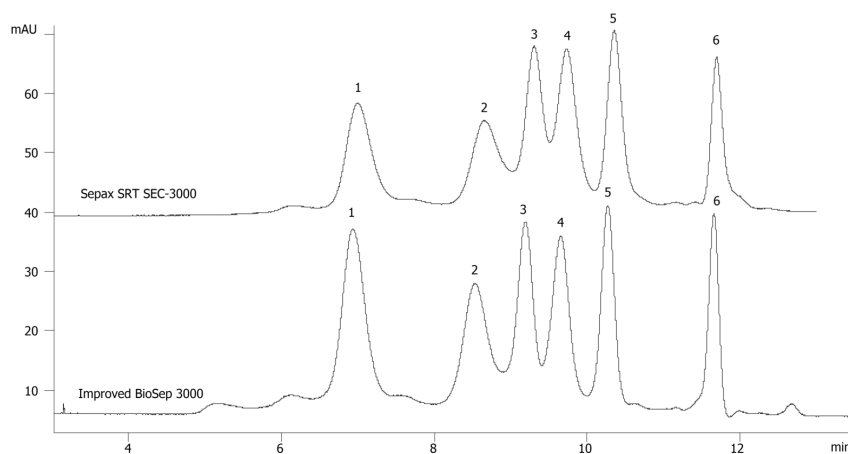
- Holder Part No.: KJ0-4282



Products used in this application:



19081



ANALYTES:

- 1 Thyroglobulin
- 2 IgG
- 3 BSA
- 4 Ovalbumin
- 5 Myoglobin
- 6 Uridine

