

HPLC Application

ID No.: 19083

Compare BioSep-SEC-S3000(2) & Sepax SRT SEC-300 High MW

Column: BioSep™ 5 µm SEC-s3000 290 Å, LC Column 300 x 7.8 mm, Ea

Dimensions: 300 x 7.8 mm ID

Order No: 00H-2146-K0

Elution Type: Isocratic

Eluent A: 100mM Sodium Phosphate, 300mM NaCl, pH 7.0

Gradient	Step No.	Time (min)	Pct A
Profile:	1	0	100

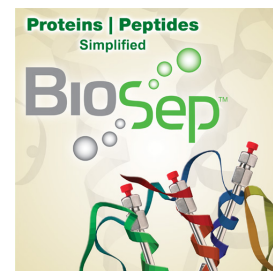
Flow Rate: 1 mL/min

Col. Temp.: ambient

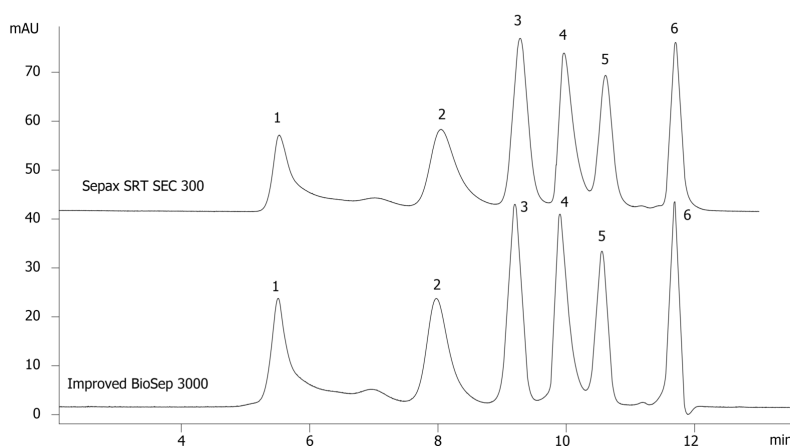
Detection: UV-Vis Abs.-Variable Wave.(UV) @ 280 nm (ambient)

Analyst Note: BioSep S-3000 in red
GFC3000 in Blue

19083



Products used in this application:



ANALYTES:

- 1 IgM
- 2 IgA
- 3 Transferrin
- 4 beta-Lactoglobulin A
- 5 Ribonuclease A
- 6 Uridine

