

HPLC Application

ID No.: 19084

Compare BioSep-SEC-S2000(2) & -S2000 Mid MW

Column: BioSep[™] 5 μ m SEC-s2000 145 \AA , LC Column 300 x 7.8 mm, Ea

Dimensions: 300 x 7.8 mm ID

Order No: 00H-2145-K0

Elution Type: Isocratic

Eluent A: 100mM Sodium Phosphate, 300mM NaCl, pH 7.0

Gradient	Step No.	Time (min)	Pct A
Profile:	1	0	100

Flow Rate: 1 mL/min

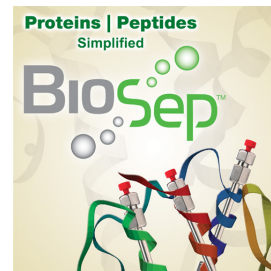
Col. Temp.: ambient

Detection: UV-Vis Abs.-Variable Wave.(UV) @ 280 nm (ambient)

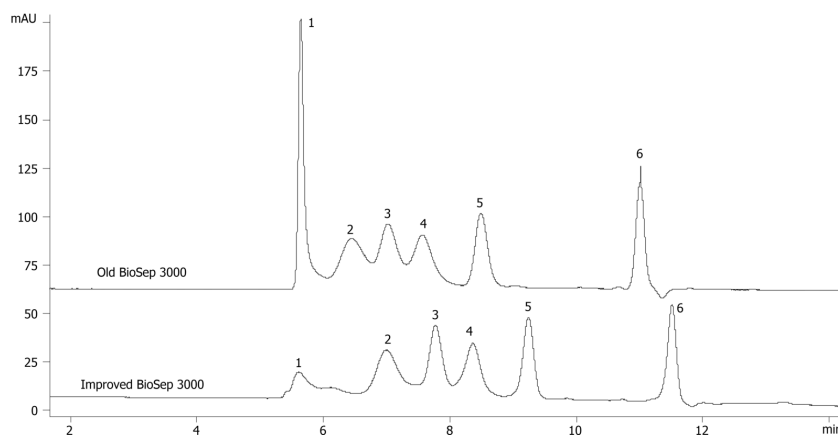
Analyst Note: BioSep S-3000 in red

GFC3000 in Blue

19084



Products used in this application:



ANALYTES:

- 1 Thyroglobulin
- 2 IgG
- 3 BSA
- 4 Ovalbumin
- 5 Myoglobin
- 6 Uridine

