

Compare BioSep-SEC-S2000(2) & -S2000 High MW

Column: BioSep™ 5 µm SEC-s3000 290 Å, LC Column 300 x 7.8 mm, Ea

Dimensions: 300 x 7.8 mm ID

Order No: 00H-2146-K0

Elution Type: Isocratic

Eluent A: 100mM Sodium Phosphate, 300mM NaCl, pH 7.0

Gradient	Step No.	Time (min)	Pct A
Profile:	1	0	100

Flow Rate: 1 mL/min

Col. Temp.: ambient

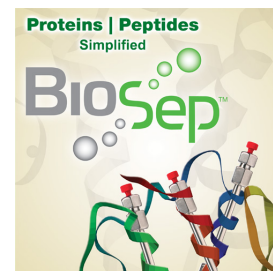
Detection: UV-Vis Abs.-Variable Wave.(UV) @ 280 nm (ambient)

Analyst Note: SecurityGuard™ Guard Cartridge System extends column lifetime.

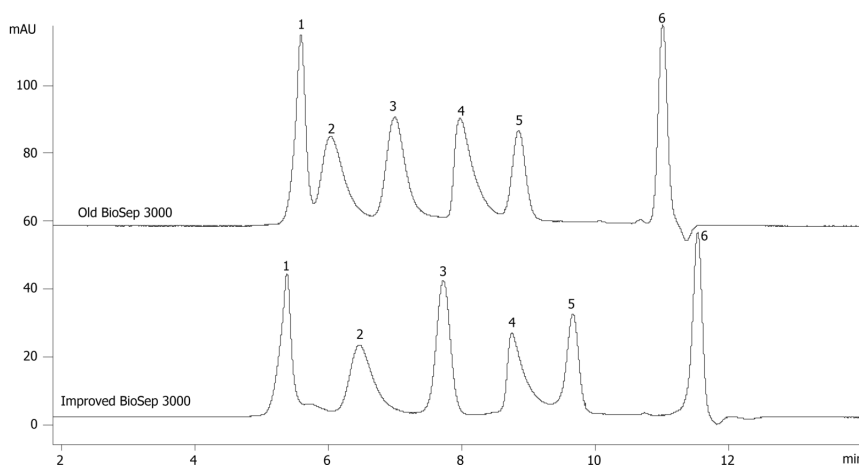
- SecurityGuard Cartridges, GFC 3000 4 x 3.0mm ID, 10/Pk Part No.: AJ0-4488

- Holder Part No.: KJ0-4282

19086



Products used in this application:



ANALYTES:

- 1 IgM
- 2 IgA
- 3 Transferrin
- 4 beta-Lactoglobulin A
- 5 Ribonuclease A
- 6 Uridine

