

HPLC Application

ID No.: 19088

Compare BioSep-SEC-S3000(2) & -S3000 4 proteins

Column: BioSep[™] 5 μ m SEC-s3000 290 \AA , LC Column 300 x 7.8 mm, Ea

Dimensions: 300 x 7.8 mm ID

Order No: 00H-2146-K0

Elution Type: Isocratic

Eluent A: 10mM Tris, 150mM NaCl, pH 7.4

Gradient	Step No.	Time (min)	Pct A
Profile:	1	0	100

Flow Rate: 0.6 mL/min

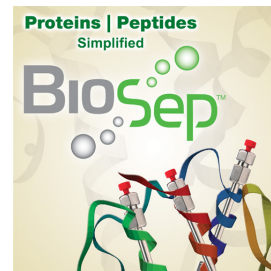
Col. Temp.: ambient

Detection: UV-Vis Abs.-Variable Wave.(UV) @ 214 nm (ambient)

Analyst Note: SecurityGuard[™] Guard Cartridge System extends column lifetime.

- SecurityGuard Cartridges, GFC 3000 4 x 3.0mm ID, 10/Pk Part No.: AJ0-4488

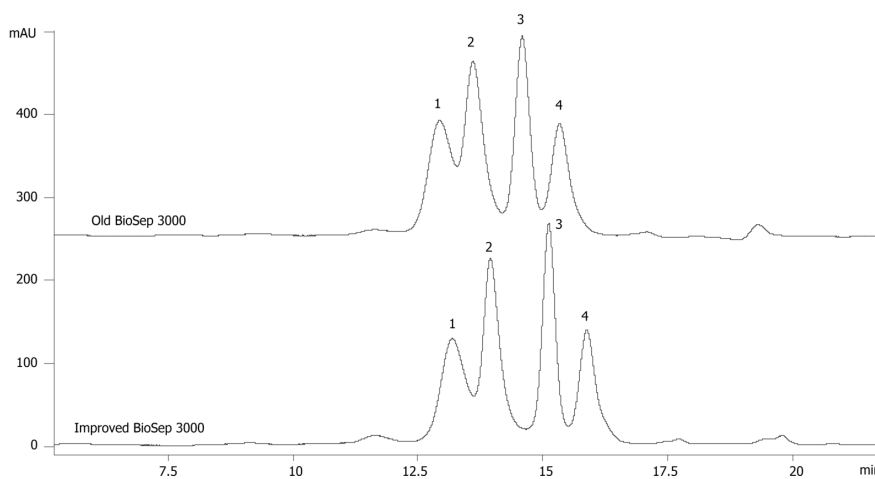
- Holder Part No.: KJ0-4282



Products used in this application:



19088



ANALYTES:

- 1 IgA
- 2 beta-Amylase
- 3 BSA
- 4 Ovalbumin

