

Compare BioSep-SEC-S4000(2) & -S4000 7 proteins

Column: BioSep™ 5 µm SEC-s4000 500 Å, LC Column 300 x 7.8 mm, Ea

Dimensions: 300 x 7.8 mm ID

Order No: 00H-2147-K0

Elution Type: Isocratic

Eluent A: 50mM Sodium Phosphate, 300mM NaCl, pH 6.8

Gradient	Step No.	Time (min)	Pct A
Profile:	1	0	100

Flow Rate: 1 mL/min

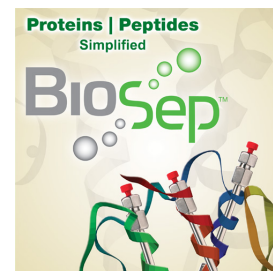
Col. Temp.: ambient

Detection: UV-Vis Abs.-Variable Wave.(UV) @ 214 nm (ambient)

Analyst Note: SecurityGuard™ Guard Cartridge System extends column lifetime.

- SecurityGuard Cartridges, GFC 4000 4 x 3.0mm ID, 10/Pk Part No.: AJ0-4489

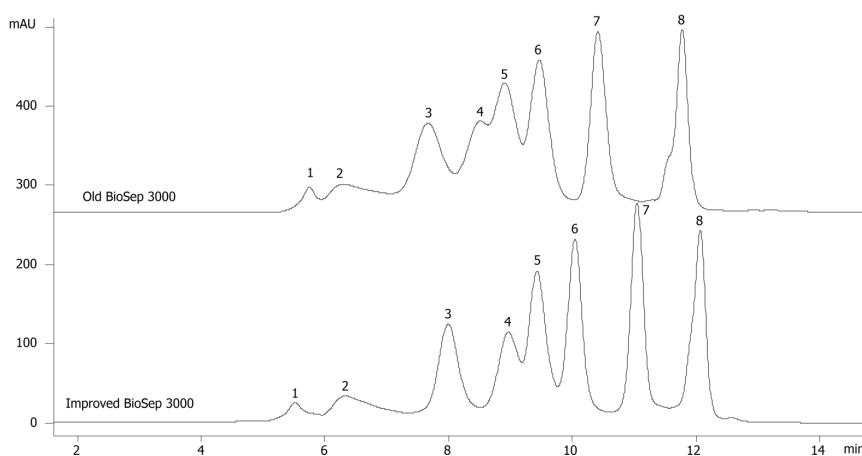
- Holder Part No.: KJ0-4282



Products used in this application:



19092



ANALYTES:

- 1 High MW impurity
- 2 IgM
- 3 Thyroglobulin
- 4 IgA
- 5 beta-Amylase
- 6 BSA
- 7 Ribonuclease A
- 8 Uridine

