

# HPLC Application

ID No.: 19105

## Impact of Flow Rate and particle size on a Chiral Separation: 3 $\mu$ m at 5.0 mL/min

**Column:** Lux<sup>®</sup> 5  $\mu$ m Cellulose-2, LC Column 250 x 4.6 mm, Ea

**Dimensions:** 250 x 4.6 mm ID

**Order No:** 00G-4457-E0

**Elution Type:** Isocratic

**Eluent A:** Methanol with 0.1% DEA

**Eluent B:** Carbon Dioxide

Gradient Profile:	Step No.	Time (min)	Pct A	Pct B
	1	0	25	75

**Flow Rate:** 5 mL/min

**Col. Temp.:** 35 °C

**Detection:** UV-Vis Abs.-Fixed Wave. (UV) @ 254 nm (35 °C)

**Detector Info:** PDA

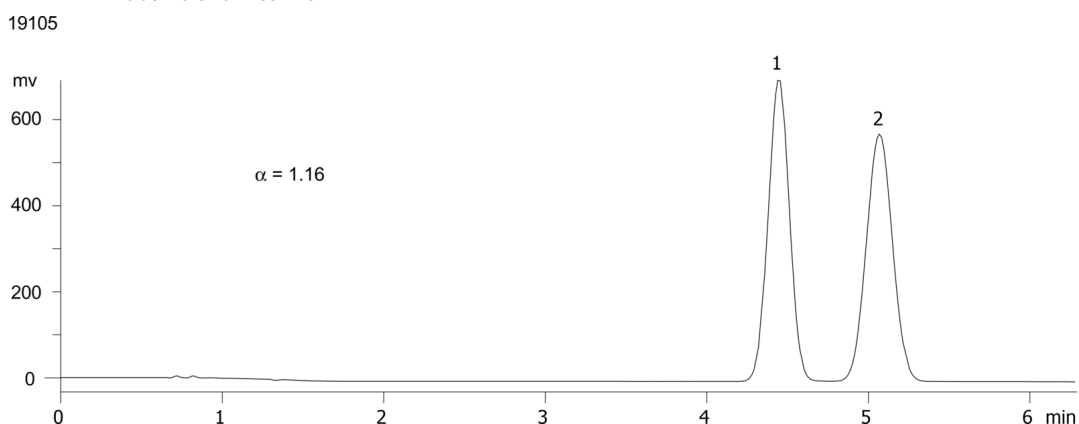
**Analyst Note:** SecurityGuard<sup>™</sup> Guard Cartridge System extends column lifetime.

- SecurityGuard Cartridges, Silica 4 x 3.0mm, 10/Pk Part No.: AJ0-4348

- Holder Part No.: KJ0-4282



Products used in this application:



### ANALYTES:

1 Propranolol

