

HPLC Application

ID No.: 19110

Comparison of Cellulose 1, 2 and Amylose 2 Selectivity with IPA

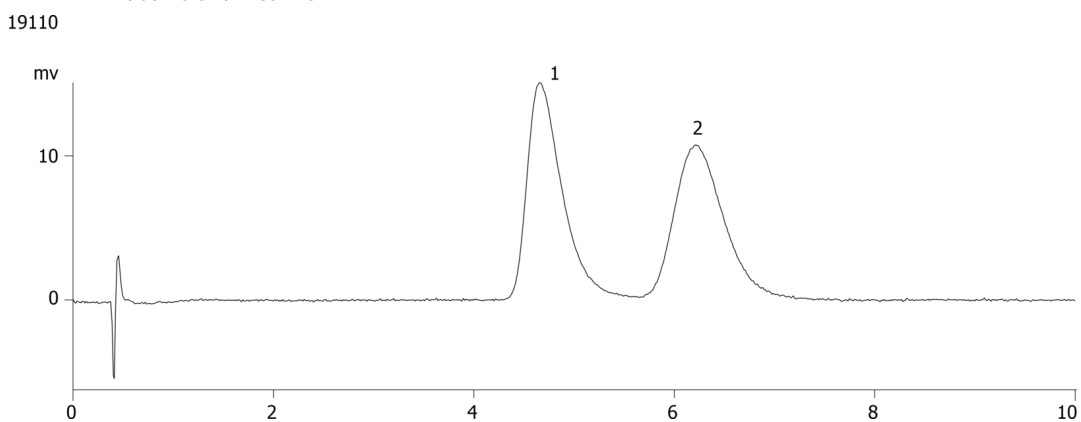
Column: N/A
Dimensions: N/A
Order No: N/A
Elution Type: N/A
Eluent A: Isopropyl Alcohol with 0.1% DEA
Eluent B: Carbon Dioxide
Gradient

Step No.	Time (min)	Pct A	Pct B
1	0	20	80

Profile:

Flow Rate: 2.5 mL/min
Col. Temp.: 35 °C
Detection: UV-Vis Abs.-Fixed Wave. (UV) @ 254 nm (35 °C)
Detector Info: PDA

Analyst Note: SecurityGuard™ Guard Cartridge System extends column lifetime.
- SecurityGuard Cartridges, Silica 4 x 3.0mm, 10/Pk Part No.: AJ0-4348
- Holder Part No.: KJ0-4282



ANALYTES:

1 Propafenone

