

HPLC Application

ID No.: 19119

Cytochrome c analysis using Kinetex 2.6u C18 50x4.6mm

Column: Kinetex[®] 2.6 μ m C18 100 \AA , LC Column 50 x 4.6 mm, Ea

Dimensions: 50 x 4.6 mm ID

Order No: 00B-4462-E0

Elution Type: Gradient

Eluent A: Water with 0.1% TFA

Eluent B: Acetonitrile with 0.1% TFA

Gradient Profile:	Step No.	Time (min)	Pct A	Pct B
	1	0	95	5
	2	5	5	95

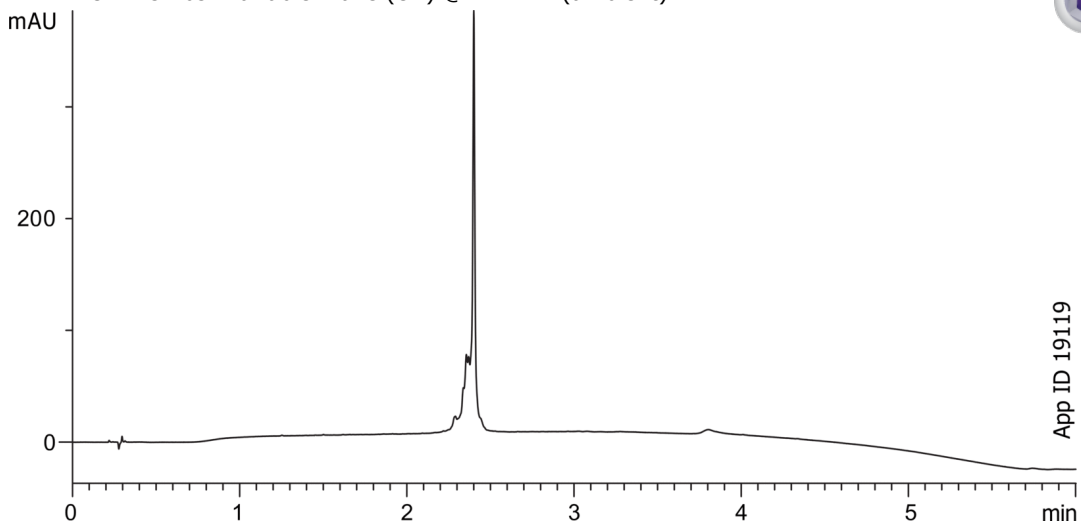
Flow Rate: 2 mL/min

Col. Temp.: ambient

Detection: UV-Vis Abs.-Variable Wave.(UV) @ 214 nm (ambient)



Products used in this application:



ANALYTES:

- 1 Cytochrome c

