

HPLC Application

ID No.: 19121

BSA tryptic map in formic acid using Kinetex 2.6u C18 150x4.6mm

Column: Kinetex® 2.6 µm C18 100 Å, LC Column 150 x 4.6 mm, Ea

Dimensions: 150 x 4.6 mm ID

Order No: 00F-4462-E0

Elution Type: Gradient

Eluent A: Water with 0.1% formic acid

Eluent B: Acetonitrile with 0.1% formic acid

Gradient Profile:	Step No.	Time (min)	Pct A	Pct B
	1	0	97	3
	2	30	50	50

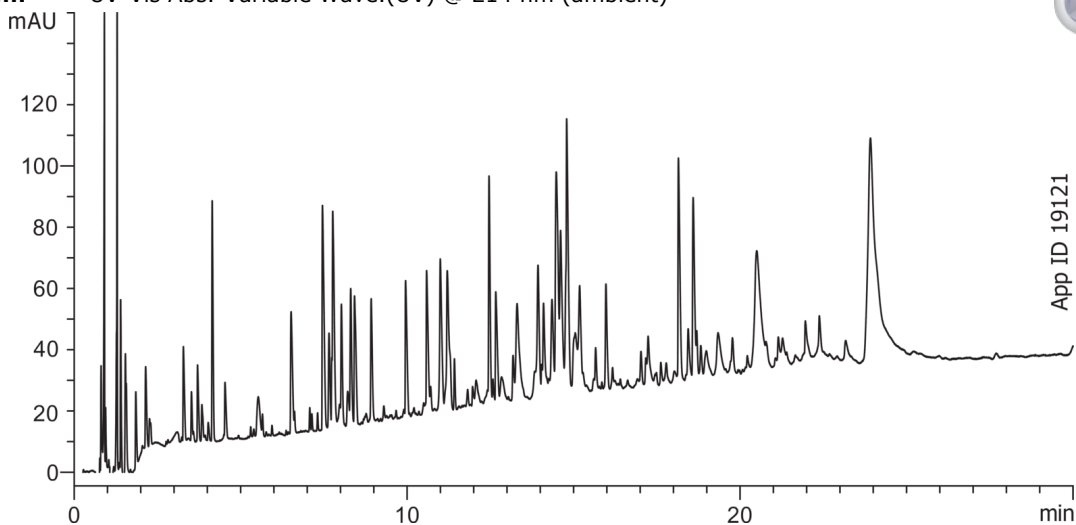
Flow Rate: 1 mL/min

Col. Temp.: ambient

Detection: UV-Vis Abs.-Variable Wave.(UV) @ 214 nm (ambient)



Products used in this application:



ANALYTES:

- 1 Bovine Serum Albumin (BSA)

