

HPLC Application

ID No.: 19124

Apomyoglobin tryptic mapping using Kinetex 2.6u C18 150x4.6mm

Column: Kinetex® 2.6 µm C18 100 Å, LC Column 150 x 4.6 mm, Ea

Dimensions: 150 x 4.6 mm ID

Order No: 00F-4462-E0

Elution Type: Gradient

Eluent A: Water with 0.1% TFA

Eluent B: Acetonitrile with 0.1% TFA

| Gradient Profile: | Step No. | Time (min) | Pct A | Pct B |
|-------------------|----------|------------|-------|-------|
| | 1 | 0 | 97 | 3 |
| | 2 | 20 | 35 | 65 |

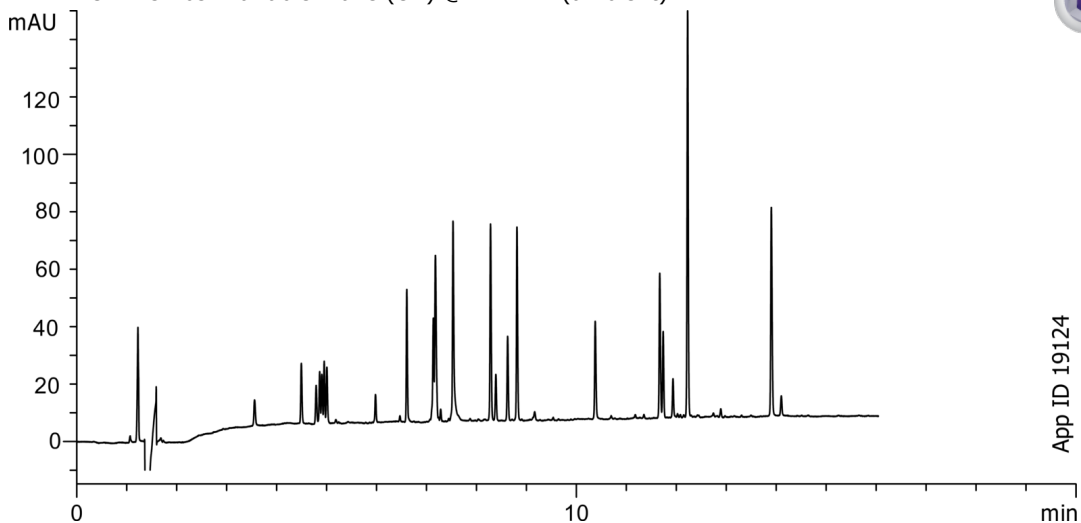
Flow Rate: 1.2 mL/min

Col. Temp.: ambient

Detection: UV-Vis Abs.-Variable Wave.(UV) @ 214 nm (ambient)



Products used in this application:



ANALYTES:

- 1 Apomyoglobin

