

# HPLC Application

ID No.: 19138

## rhEPO (2.5 days incubated 37C) on BioSep-SEC-S2000(2)

**Column:** BioSep<sup>™</sup> 5  $\mu$ m SEC-s2000 145  $\text{\AA}$ , LC Column 300 x 4.6 mm, Ea

**Dimensions:** 300 x 4.6 mm ID

**Order No:** 00H-2145-E0

**Elution Type:** Isocratic

**Eluent A:** 50mM Na Phosphate, 300mM NaCl pH 6.8

Gradient	Step No.	Time (min)	Pct A
<b>Profile:</b>	<b>1</b>	0	100

**Flow Rate:** 0.35 mL/min

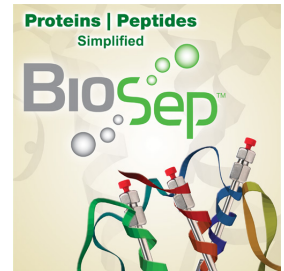
**Col. Temp.:** ambient

**Detection:** UV-Vis Abs.-Variable Wave.(UV) @ 220 nm (ambient)

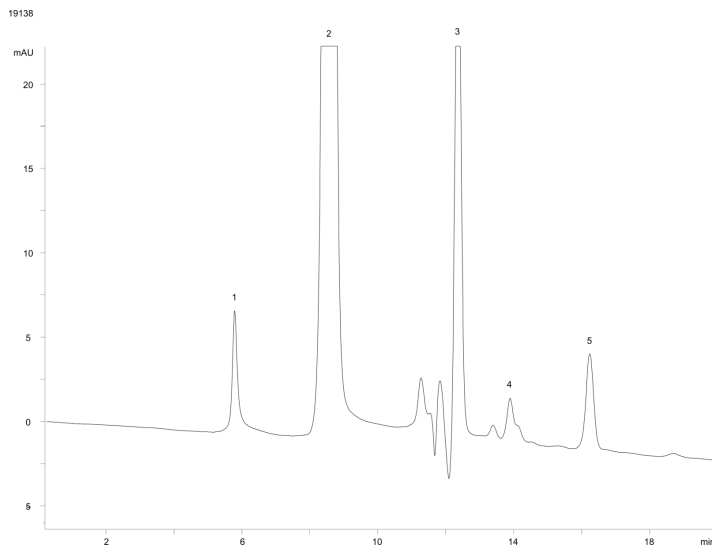
**Analyst Note:** SecurityGuard<sup>™</sup> Guard Cartridge System extends column lifetime.

- SecurityGuard Cartridges, GFC-2000 4 x 3.0mm ID, 10/Pk Part No.: AJ0-4487

- Holder Part No.: KJ0-4282



Products used in this application:



### ANALYTES:

- 1** High MW impurity  
Retention Time: 5.8 min
- 2** EPO monomer  
Retention Time: 8.44 min
- 3** impurity  
Retention Time: 11.993 min

