

HPLC Application

ID No.: 19150

CD Detection of TSO on LUX 5 μ m Cellulose-2 250 x 4.6 mm ID in NP

Column: Lux[®] 5 μ m Cellulose-2, LC Column 250 x 4.6 mm, Ea

Dimensions: 250 x 4.6 mm ID

Order No: 00G-4457-E0

Elution Type: Isocratic

Eluent A: 0.1% DEA in Hexane

Eluent B: 0.1% DEA in IPA

Gradient Profile:	Step No.	Time (min)	Pct A	Pct B
	1	10	90	10

Flow Rate: 1 mL/min

Col. Temp.: 25 °C

Detection: Circular Dichroism @ 254 nm (25 °C)

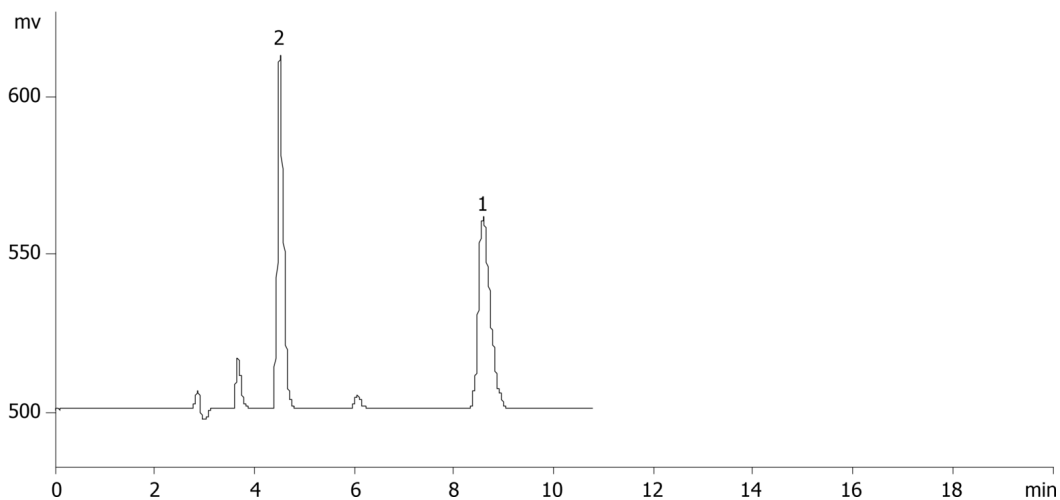
Detector Info: Jasco CDD

Analyst Note: Please see the corresponding CD trace (attached document).

19150



Products used in this application:



ANALYTES:

- 1 trans-Stilbene oxide
- 2 trans-Stilbene oxide

