

# HPLC Application

ID No.: 19165

## USP 621: Allowable changes in flow rate- 1.5 mL/Min

**Column:** Luna® 5 µm C18(2) 100 Å, LC Column 250 x 4.6 mm, Ea

**Dimensions:** 250 x 4.6 mm ID

**Order No:** 00G-4252-E0

**Elution Type:** Isocratic

**Eluent A:** Water

**Eluent B:** Acetonitrile

Gradient Profile:	Step No.	Time (min)	Pct A	Pct B
	1	0	45	55

**Flow Rate:** 1.5 mL/min

**Col. Temp.:** ambient

**Detection:** UV-Vis Abs.-Variable Wave.(UV) @ nm (ambient)

**Analyst Note:** SecurityGuard™ Guard Cartridge System extends column lifetime.

- SecurityGuard Cartridges, C18 4 x 3.0mm ID, 10/Pk Part No.: AJ0-4287

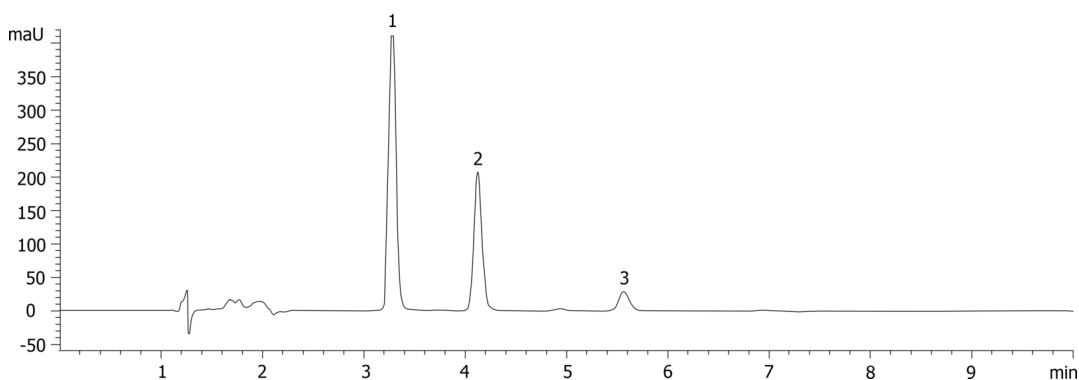
- Holder Part No.: KJ0-4282



Products used in this application:



19165



### ANALYTES:

- 1 Ethyl paraben
- 2 Estradiol
- 3 Estrone

