

HPLC Application

ID No.: 19166

Expanded Amphetamines on Kinetex C18 2.6µm 50x2.1mm by LCMS

Column: Kinetex® 2.6 µm C18 100 Å, LC Column 50 x 2.1 mm, Ea

Dimensions: 50 x 2.1 mm ID

Order No: 00B-4462-AN

Elution Type: Gradient

Eluent A: 0.1%FA-5mM ammonium acetate in H₂O

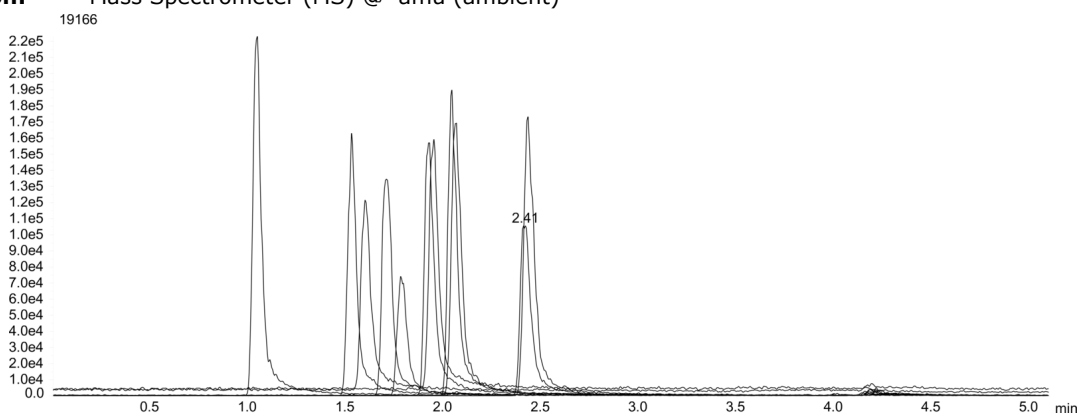
Eluent B: 0.1%FA-5mM ammonium acetate in Methanol

Gradient Profile:	Step No.	Time (min)	Pct A	Pct B
	1	0	90	10
	2	3	60	40
	3	3.02	5	95
	4	3.3	5	95
	5	3.31	90	10
	6	5.1	90	10

Flow Rate: 450 µL/min

Col. Temp.: ambient

Detection: Mass Spectrometer (MS) @ amu (ambient)



Products used in this application:



Expanded Amphetamines on Kinetex C18 2.6 μ m 50x2.1mm by LCMS

ANALYTES:

- 1 HMMA
- 2 Amphetamine-d11
- 3 Amphetamine
- 4 Methamphetamine
- 5 Methamphetamine-d14
- 6 MDA-d5
- 7 MDA
- 8 MDMA-d5
- 9 MDMA
- 10 MDEA-d5
- 11 MDEA

