

# HPLC Application

ID No.: 19167

## Pain Panel with and without sample focusing on Kinetex C18 2.6 $\mu$ m 50 x 2.1 mm by LC/MS

**Column:** Kinetex<sup>®</sup> 2.6  $\mu$ m C18 100 Å, LC Column 50 x 2.1 mm, Ea

**Dimensions:** 50 x 2.1 mm ID

**Order No:** 00B-4462-AN

**Elution Type:** Gradient

**Eluent A:** 0.1% Formic acid in H<sub>2</sub>O

**Eluent B:** 0.1% Formic acid ACN

| Gradient Profile: | Step No. | Time (min) | Pct A | Pct B |
|-------------------|----------|------------|-------|-------|
|                   | 1        | 0          | 95    | 5     |
|                   | 2        | 0.5        | 95    | 5     |
|                   | 3        | 2.5        | 5     | 95    |
|                   | 4        | 3.5        | 5     | 95    |
|                   | 5        | 3.51       | 95    | 5     |
|                   | 6        | 5.3        | 95    | 5     |

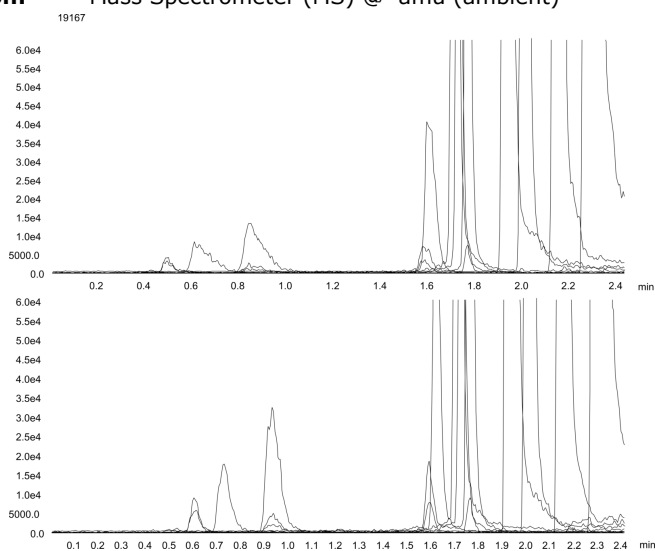
**Flow Rate:** 450  $\mu$ L/min

**Col. Temp.:** ambient

**Detection:** Mass Spectrometer (MS) @ amu (ambient)



Products used in this application:



## Pain Panel with and without sample focusing on Kinetex C18 2.6 $\mu$ m 50 x 2.1 mm by LC/MS

### ANALYTES:

- 1 Morphine
- 2 Oxymorphone
- 3 Hydromorphone
- 4 Codeine
- 5 Naloxone
- 6 Oxycodone
- 7 Naltrexone
- 8 Hydrocodone
- 9 Tramadol
- 10 Meperidine
- 11 Fentanyl
- 12 Buprenorphine
- 13 Methadone

