

Cyanuric acid and Melamine on Kinetex HILIC 2.6µm 50x2.1mm by LCMS

Column: Kinetex® 2.6 µm HILIC 100 Å, LC Column 50 x 2.1 mm, Ea

Dimensions: 50 x 2.1 mm ID

Order No: 00B-4461-AN

Elution Type: Gradient

Eluent A: 50/40/10 ACN/H₂O/100mM ammonium acetate pH5.8

Eluent B: 90/10 ACN/100mM ammonium acetate pH5.8

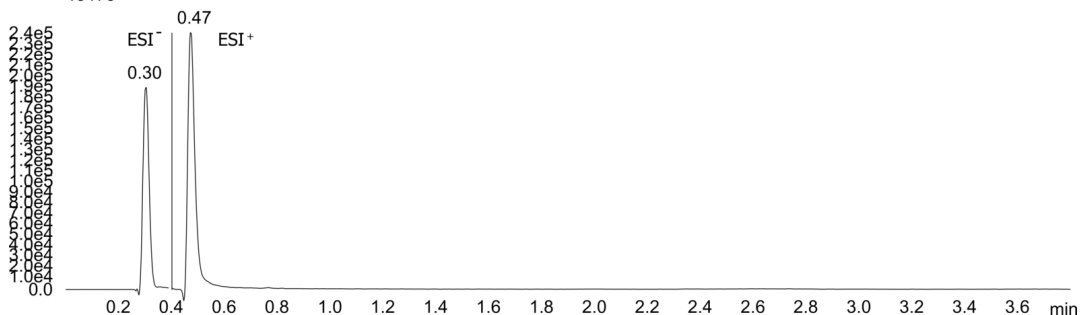
Gradient Profile:	Step No.	Time (min)	Pct A	Pct B
	1	0	0	100
	2	0.8	0	100
	3	0.81	100	0
	4	1.1	100	0
	5	1.11	0	100
	6	3.8	0	100

Flow Rate: 700 µL/min

Col. Temp.: ambient

Detection: Mass Spectrometer (MS) @ amu (ambient)

19170



Products used in this application:



ANALYTES:

- 1 Cyanuric acid
Retention Time: 0.3 min
- 2 Cyanuric acid
Retention Time: 0.3 min
- 3 Melamine
Retention Time: 0.47 min
- 4 Melamine
Retention Time: 0.47 min

