

# HPLC Application

ID No.: 19229

## USP 621: Allowable changes Column Diameter-3.0mm ID

**Column:** Luna® 5 µm C18(2) 100 Å, LC Column 150 x 3 mm, Ea

**Dimensions:** 150 x 3 mm ID

**Order No:** 00F-4252-Y0

**Elution Type:** Isocratic

**Eluent A:** See analyst note

Gradient Profile:	Step No.	Time (min)	Pct A
	1	0	100

**Flow Rate:** 0.36 mL/min

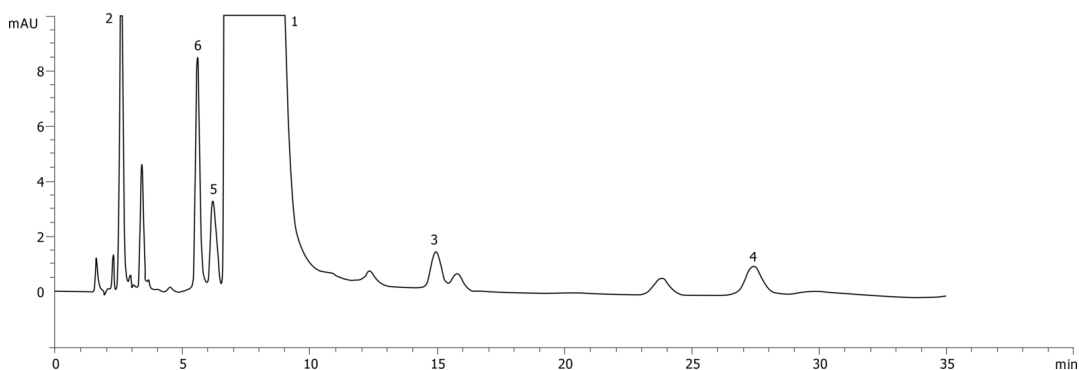
**Col. Temp.:** ambient

**Detection:** UV-Vis Abs.-Variable Wave.(UV) @ nm (ambient)

**Analyst Note:** Isocratic: 100% of 2.0g of Sodium Octanesulphonate + 0.8g of Tetrabutyl Ammonium Hydrogen Sulphate in 2L of 360ml Methanol + 40ml of THF + 1600ml of 3.4g of potassium Dihydrogen Phosphate in 2L of water (pH adjusted to 3.0 using Phosphoric acid)



Products used in this application:



### ANALYTES:

- 1 Atenolol
- 2 Impurity B
- 3 Impurity F
- 4 Impurity G
- 5 Impurity I
- 6 Impurity J

