

Competitor Comparison-Tricyclic Antidepressant on Kinetex 2.6 µm C18 100 x 4.6mm

Column: Kinetex® 2.6 µm C18 100 Å, LC Column 100 x 4.6 mm, Ea

Dimensions: 100 x 4.6 mm ID

Order No: 00D-4462-E0

Elution Type: Isocratic

Eluent A: 20 mM Potassium Phosphate pH 7

Eluent B: MeOH

Eluent C: ACN

Gradient Profile:	Step No.	Time (min)	Pct A	Pct B	Pct C
	1	0	50	35	15

Flow Rate: 1.5 mL/min

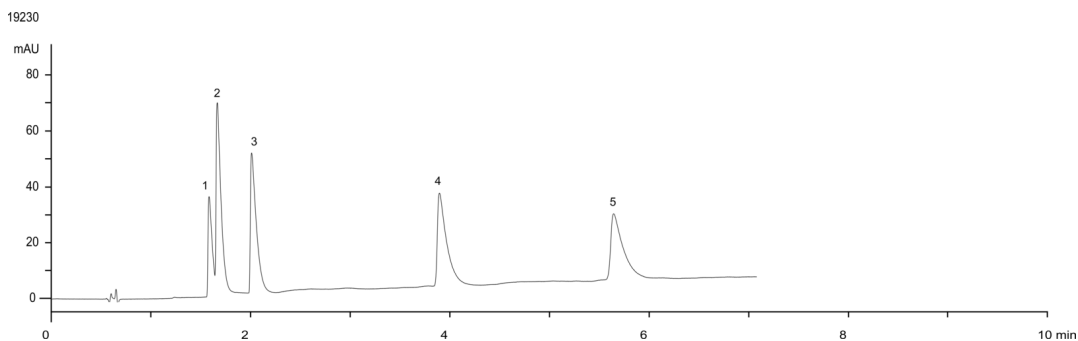
Col. Temp.: ambient

Detection: UV-Vis Abs.-Variable Wave.(UV) @ 254 nm (ambient)

Detector Info: 298bar



Products used in this application:



ANALYTES:

- 1** Protriptyline
Retention Time: 1.561 min
- 2** Desipramine
Retention Time: 1.641 min
- 3** Nortriptyline
Retention Time: 1.893 min
- 4** Imipramine
Retention Time: 3.849 min
- 5** Amitriptyline
Retention Time: 5.578 min

