

Low MW proteins and peptides on BioSep2000(2) non-denaturing condition

Column: BioSep™ 5 µm SEC-s2000 145 Å, LC Column 300 x 7.8 mm, Ea

Dimensions: 300 x 7.8 mm ID

Order No: 00H-2145-K0

Elution Type: Isocratic

Eluent A: 50mM Na phosphate, 300mM NaCl pH 6.8

Gradient	Step No.	Time (min)	Pct A
Profile:	1	0	100

Flow Rate: 1 mL/min

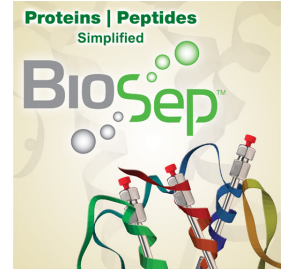
Col. Temp.: ambient

Detection: UV-Vis Abs.-Variable Wave.(UV) @ 214 nm (ambient)

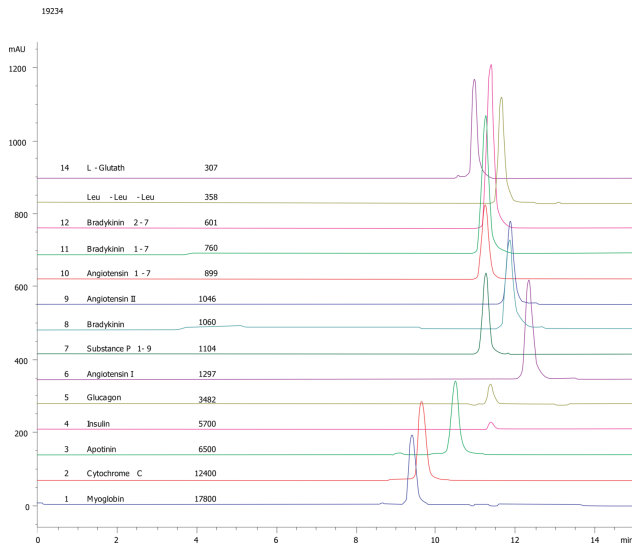
Analyst Note: SecurityGuard™ Guard Cartridge System extends column lifetime.

- SecurityGuard Cartridges, GFC-2000 4 x 3.0mm ID, 10/Pk Part No.: AJ0-4487

- Holder Part No.: KJ0-4282



Products used in this application:



ANALYTES:

1 Proteins and peptides

