

HPLC Application

ID No.: 19246

Extraction of Analgesics from Plasma Using Strata X-A on Kinetex 2.6u, C18, 50x2.1mm by LC-UV

Column: Kinetex[®] 2.6 μ m C18 100 Å, LC Column 50 x 2.1 mm, Ea

Dimensions: 50 x 2.1 mm ID

Order No: 00B-4462-AN

Elution Type: Gradient

Eluent A: 20 mM KH₂PO₄(pH 7.0)

Eluent B: Methanol

Gradient Profile:	Step No.	Time (min)	Pct A	Pct B
	1	0	90	10
	2	1	90	10
	3	1.01	30	70
	4	5.5	30	70

Flow Rate: 0.4 mL/min

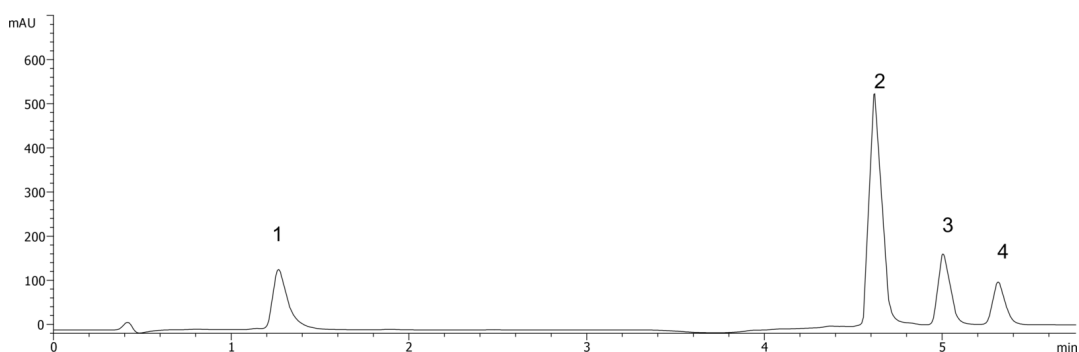
Col. Temp.: ambient

Detection: UV-Vis Abs.-Variable Wave.(UV) @ 230 nm (ambient)

19246



Products used in this application:



ANALYTES:

- 1** Salicylic acid
Retention Time: 1.26 min
- 2** Naproxen
Retention Time: 4.6 min
- 3** Fenoprofen
Retention Time: 5 min
- 4** Ibuprofen
Retention Time: 5.3 min

