

Chiral SFC Purification of Atenolol on Lux Cellulose-1

Column: Lux® 5 µm Cellulose-1, LC Column 250 x 21.2 mm, AXIA™ Packed, Ea

Dimensions: 250 x 21.2 mm ID

Order No: 00G-4459-P0-AX

Elution Type: Isocratic

Eluent A: 0.1% DEA in Methanol

Eluent B: 0.1% DEA in Carbon Dioxide

Gradient Profile:	Step No.	Time (min)	Pct A	Pct B
	1	10	25	75

Flow Rate: 50 mL/min

Col. Temp.: 37 °C

Detection: UV-Vis Abs.-Variable Wave.(UV) @ 254 nm (37 °C)

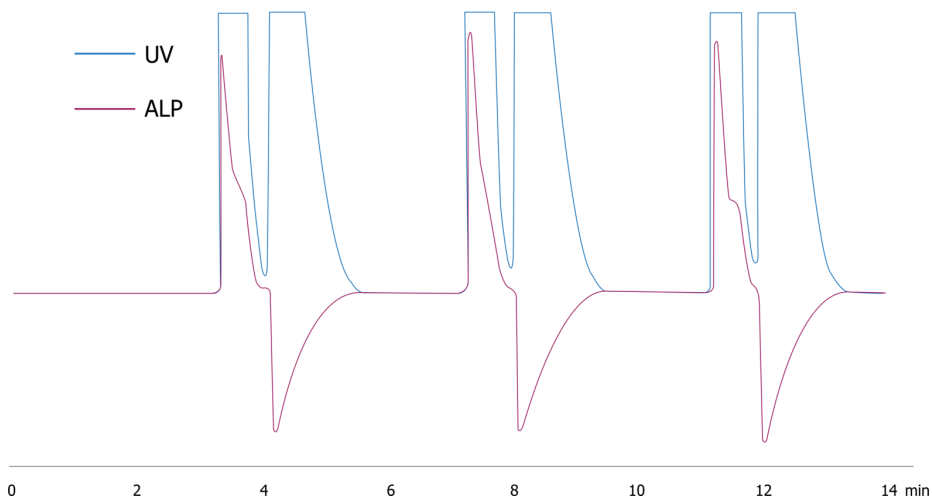
Detector Info: PDR Chiral ALP

Analyst Note: SecurityGuard™ Guard Cartridge System extends column lifetime.

- SecurityGuard PREP Cartridge, Lux Cellulose-1, 15 x 21.2mm ID, Ea Part No.: AJ0-8405

- Holder Part No.: AJ0-8223

19266



ANALYTES:

1 Atenolol

Retention Time: 3 min

2 Atenolol

Retention Time: 4 min



Products used in this application:

