

Chiral SFC Purification of Terfenadine on Lux Cellulose-2

Column: Lux® 5 µm Cellulose-2, LC Column 250 x 21.2 mm, AXIA™ Packed, Ea

Dimensions: 250 x 21.2 mm ID

Order No: 00G-4457-P0-AX

Elution Type: Isocratic

Eluent A: 0.1% DEA in Methanol

Eluent B: 0.1% DEA in Carbon Dioxide

Gradient Profile:	Step No.	Time (min)	Pct A	Pct B
	1	10	25	75

Flow Rate: 50 mL/min

Col. Temp.: 37 °C

Detection: UV-Vis Abs.-Diode Array (PDA) @ 220 nm (ambient)

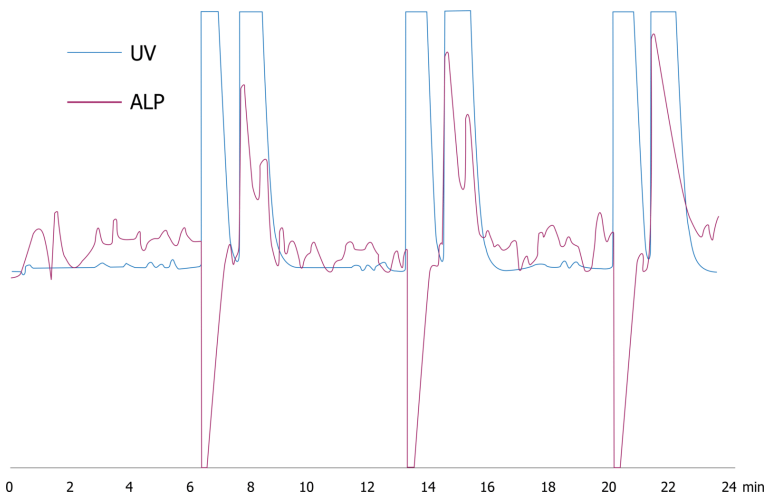
Detector Info: PDR Chiral ALP

Analyst Note: SecurityGuard™ Guard Cartridge System extends column lifetime.

- SecurityGuard PREP Cartridge, Lux Cellulose-2, 15 x 21.2mm ID, Ea Part No.: AJ0-8400

- Holder Part No.: AJ0-8223

19273



ANALYTES:

- 1 Terfenadine
- 2 Terfenadine



Products used in this application:

