

HPLC Application

ID No.: 19274

Extraction of Indole 3 carboxylic acid from Strata-X-A on Gemini 5u, C18, 150x4.6mm Column

Column: Gemini[®] 5 µm C18 110 Å, LC Column 150 x 4.6 mm, Ea

Dimensions: 150 x 4.6 mm ID

Order No: 00F-4435-E0

Elution Type: Isocratic

Eluent A: 20 mM KH₂PO₄(pH 2.5)

Eluent B: Acetonitrile

Gradient Profile:	Step No.	Time (min)	Pct A	Pct B
	1	0	75	25

Flow Rate: 1 mL/min

Col. Temp.: ambient

Detection: UV-Vis Abs.-Variable Wave.(UV) @ 220 nm (ambient)

Analyst Note: SecurityGuard[™] Guard Cartridge System extends column lifetime.

- SecurityGuard Cartridges, Gemini C18 4 x 3.0mm ID, 10/Pk Part No.: AJ0-7597

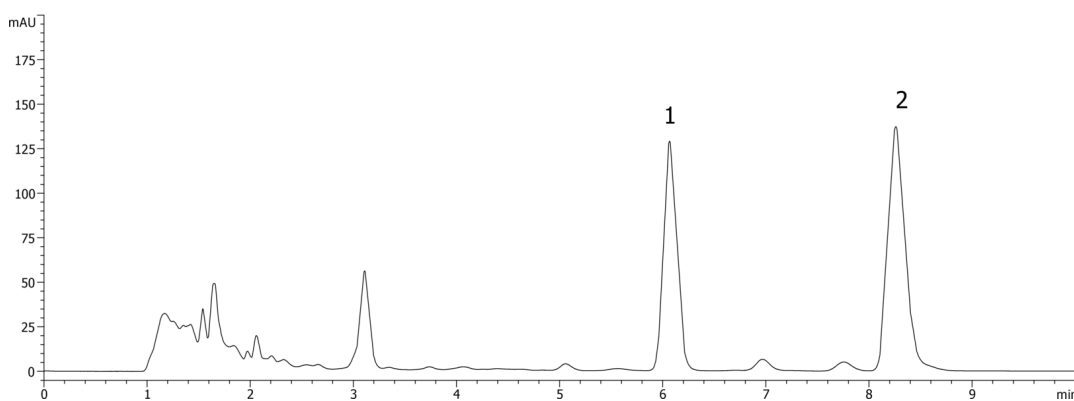
- Holder Part No.: KJ0-4282



Products used in this application:



19274



ANALYTES:

1 Indole-3-carboxylic acid

Retention Time: 6.06 min

2 Salicylic acid

Retention Time: 8.26 min

